

Public Access Work Shop (10-18-05) Presentation

South Bay Salt Pond Restoration Project Public Access Design Workshop

Tuesday, October 18, 2005

7:00 to 9:30 pm

Hayes Mansion, San Jose



1

Workshop Overview

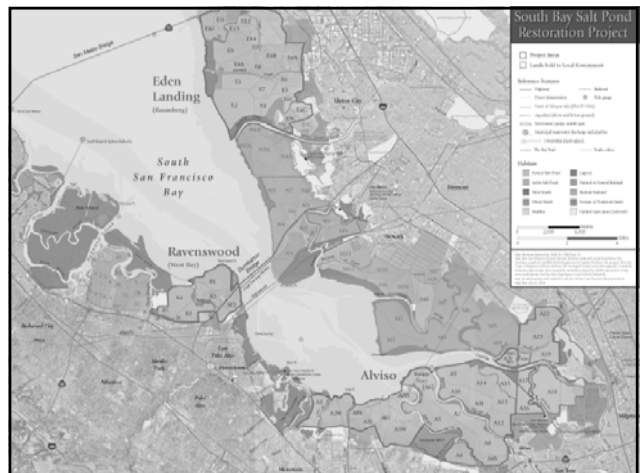
1. Review foundational and site-specific concepts used by Public Access Work Group and consultants in developing initial Public Access alternatives;
2. Identify additional design principles and considerations, coming out of tours (e.g., quality versus quantity, adjacent natural and historic site access);
3. Learn history of hunting in the South Bay; and
4. Identify priority public access for Phase 1 in Eden Landing and Alviso area.

2

Workshop Agenda

Time	Agenda Item	Lead Presenter
7:00 – 7:10	Welcome, Introductions, and Objectives of Workshop	Steve Ritchie, Executive Project Manager
7:10 – 7:30	Review of development of the Alternatives for Recreation and Public Access	Steve Ritchie with Donna Plunkett, EDAW
7:30 – 7:50	History of Hunting in the South Bay	Mark Hennelly, California Waterfowl Association
7:50 – 8:00	Landowning Agencies' Perspectives	Carl Wilcox and John Krause, California Department of Fish & Game Mendel Stewart, US Fish & Wildlife Service
8:00 – 9:25	Highlights from Tours and Site Design: Eden Landing and Alviso Area	Steve Ritchie with Center for Collaborative Policy Staff
9:25 – 9:30	Next Steps	Steve Ritchie

3



Public Access Work Shop (10-18-05) Presentation

National Wildlife Refuge System Improvement Act of 1997

- Recognizes that wildlife-dependent recreational uses involving *hunting, fishing, wildlife observation and photography, and environmental education and interpretation*, when determined to be compatible, are legitimate and appropriate public uses of the Refuge System

5

Wildlife-Dependent Recreational Uses



Hunting



Fishing



Wildlife Observation



Photography



Environmental Education



Interpretation

National Wildlife Refuge System Improvement Act of 1997

- Recognizes that these compatible wildlife-dependent recreational uses are the priority general public uses of the Refuge System
- Establishes a new process for determining compatible uses on refuges

7

Closed Until Open

The Code of Federal Regulations states

“ . . . all areas included in the NWRS are closed to public access until and unless we open the area for a use or uses . . . ”

8

What is a Compatible Use?

A proposed or existing use that, in the sound professional judgment of the Refuge manager, will not materially interfere with or detract from the fulfillment of the mission of the National Wildlife Refuge System or the purpose for which the refuge was established.

9

Factors Considered in Making a Compatibility Determination

- Impacts to Biological and other Refuge Resources
- Consistency with the Refuge Purpose and the Mission of the NWRS
- Potential for Conflicts Among Uses

10

Factors Considered in Making a Compatibility Determination

- Availability of Funding, Personnel and Facilities
- Public Safety
- Quality of the Experience

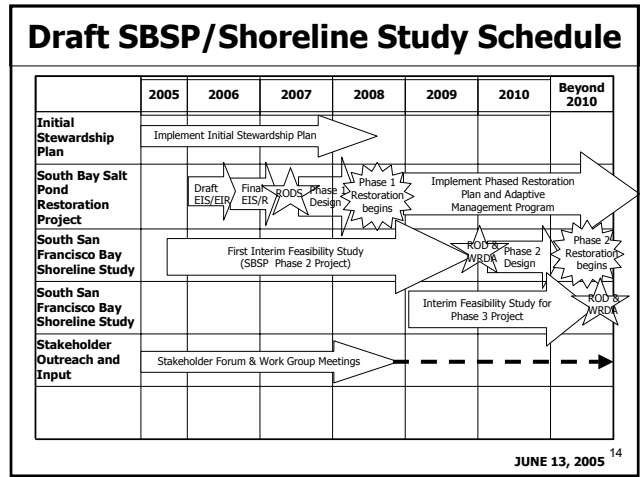
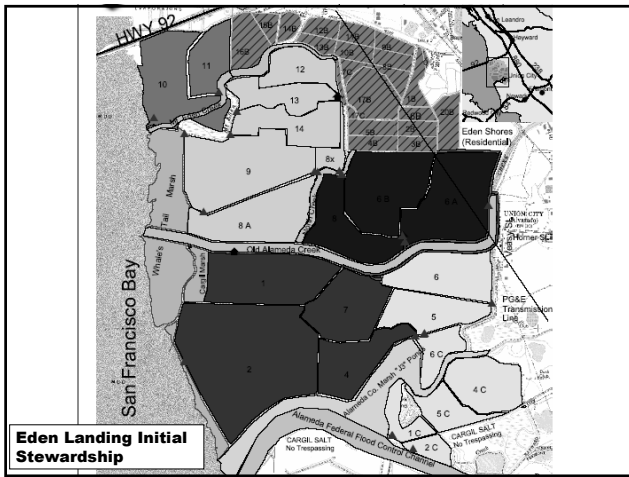
11

Purposes of Don Edwards NW Refuge

- Preserve and enhance wildlife habitat in south San Francisco Bay;
- Protect migratory waterfowl and Endangered Species; and to
- Provide an opportunity for wildlife-oriented recreation and nature study.

12

Public Access Work Shop (10-18-05) Presentation



Next Steps

- Draft Final Alternatives Report: 12/16/05
- Stakeholder Forum Meeting: 10/21/05
- Stakeholder Forum Meeting: 1/12/06
- Shoreline Study Kick-Off: 1/25/06

15