



# South Bay Salt Pond Restoration Project



*Turning the Tide...*







# Why Restore the South Bay?

Docent-led Interpretive Tour



Least Sandpipers

1983 Alviso Floods



# Presentation Overview

- Background
- Acquisition of salt ponds
- Transfer of salt ponds to public ownership
- Long-term restoration planning process



# A Look Back ...



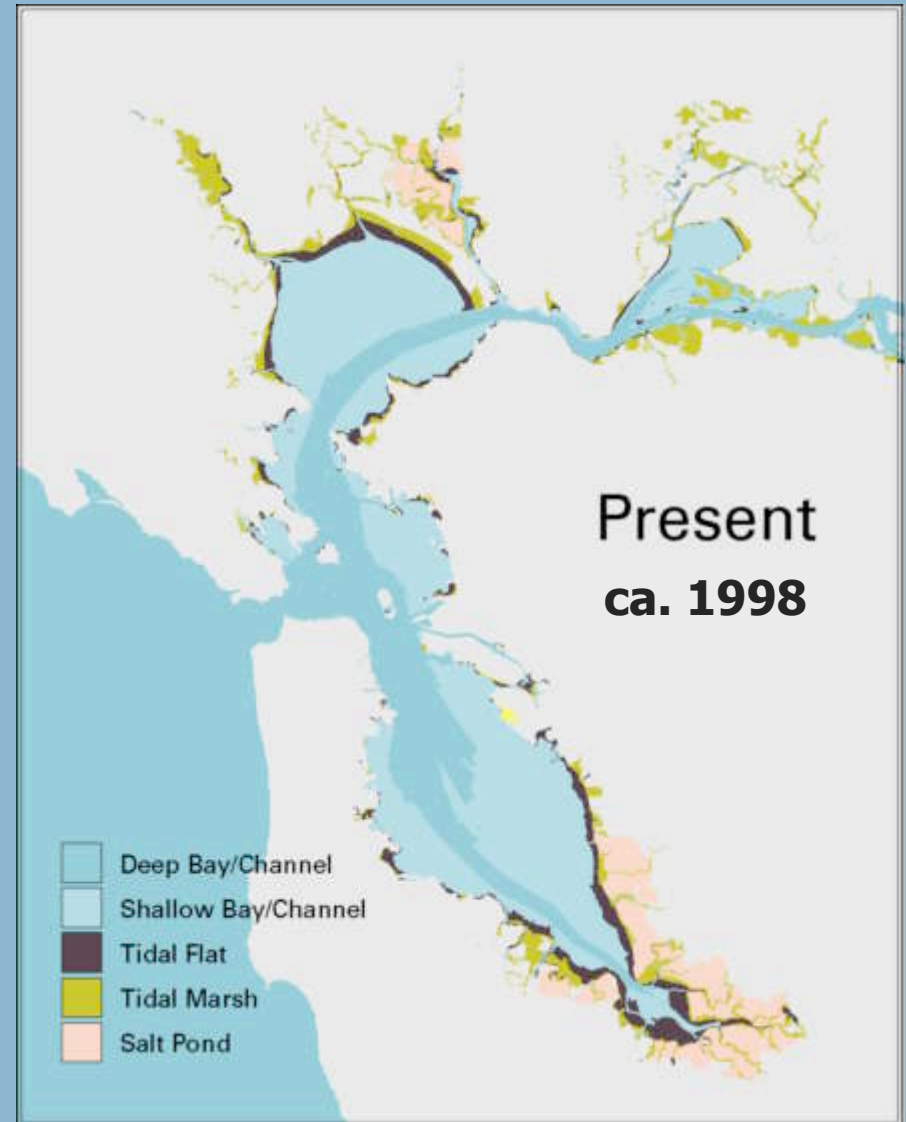
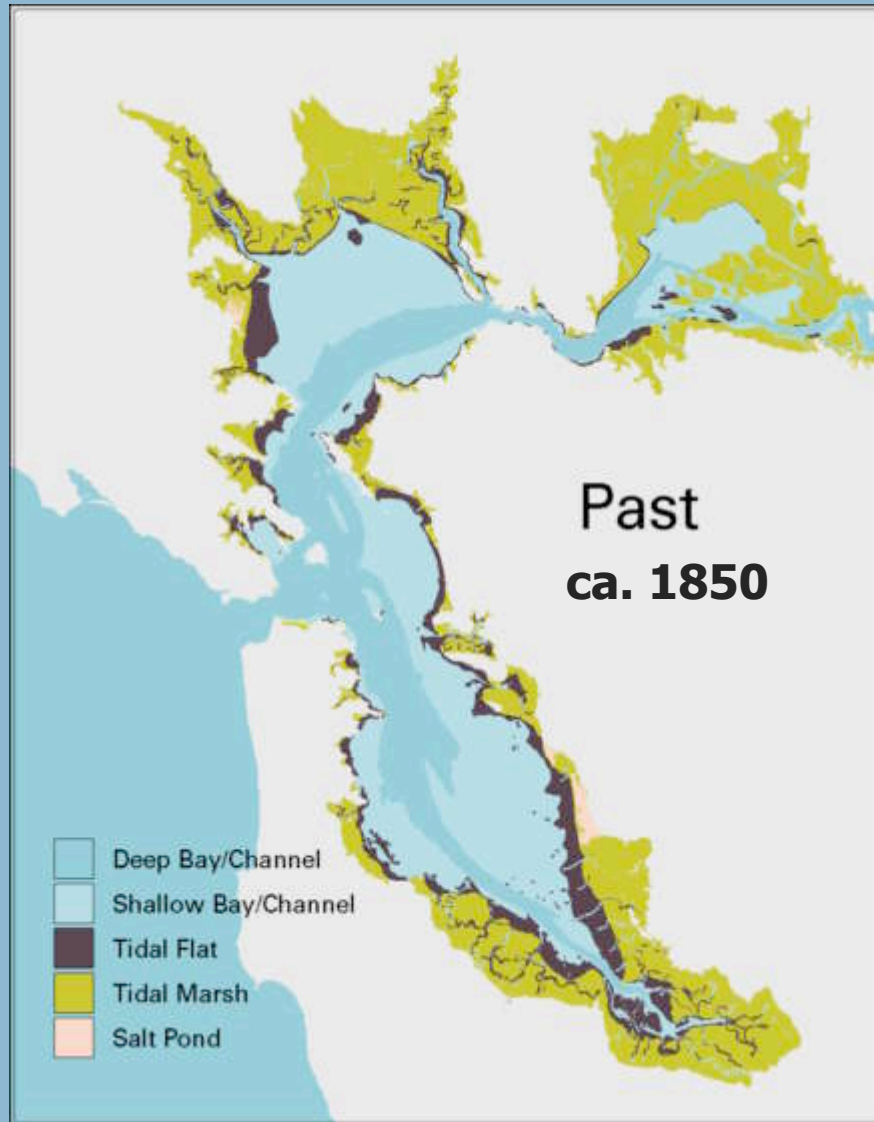
A large flock of birds, likely geese, ducks, and seabirds, is shown in flight over a body of water. The birds are densely packed, creating a sense of a massive flock. The water is a deep blue, and the sky is a lighter blue. The birds are in various stages of flight, with some appearing to be landing or taking off. The overall scene is one of a natural, wild environment.

# Natural Wilderness

“...flocks of geese, ducks, and seabirds were so enormous that when alarmed by a rifle shot they were said to rise in a dense cloud of noise like that of a hurricane...”

(from *The Ohlone Way*)

# Wetlands Past and Present



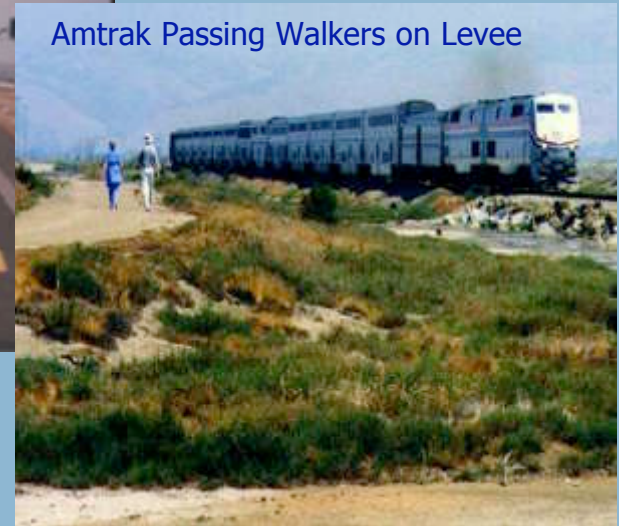


# Wetland Benefits

Avocet - © Peter LaTourrette



Amtrak Passing Walkers on Levee



1995 San Jose Floods



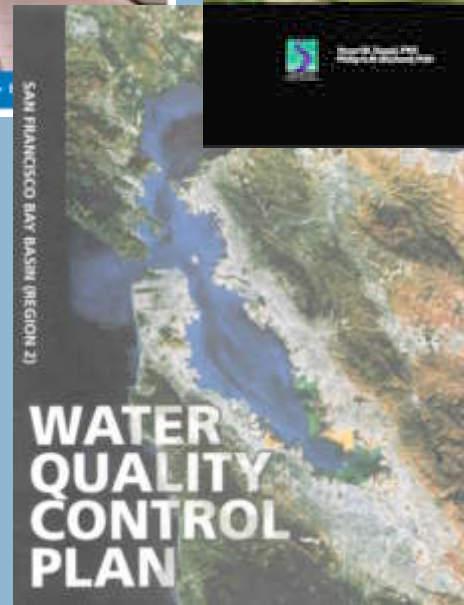
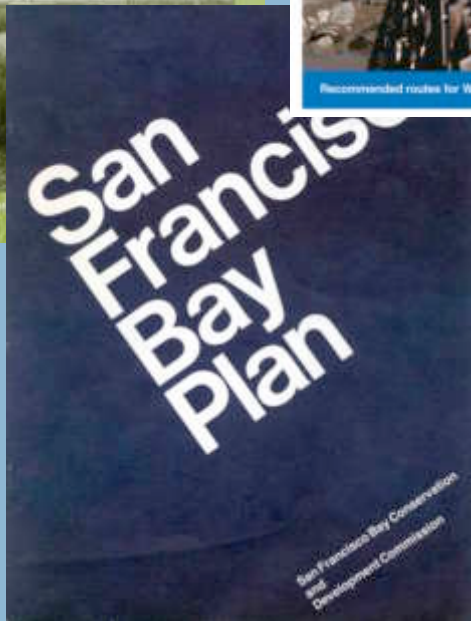
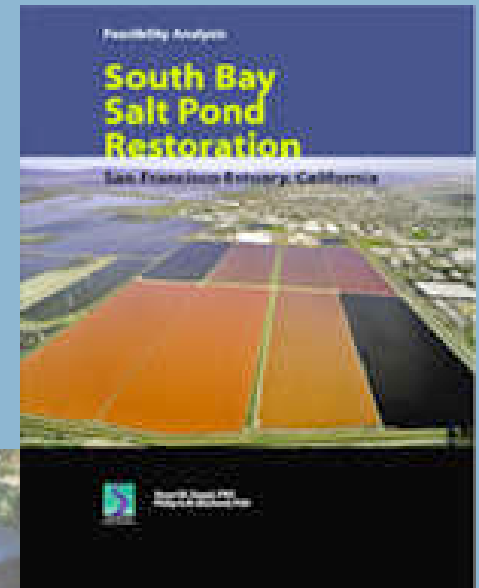
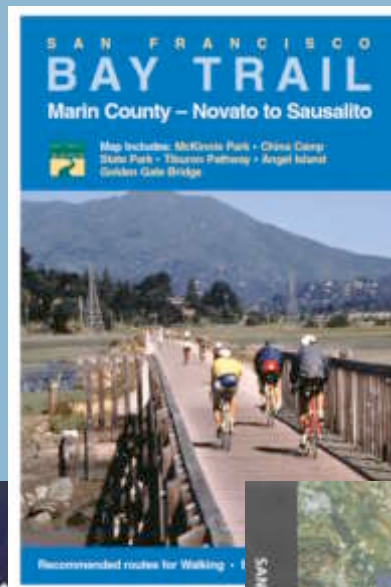
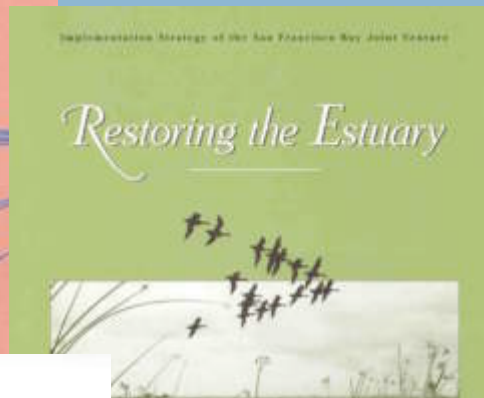
Chinook Salmon

# San Francisco Bay Features

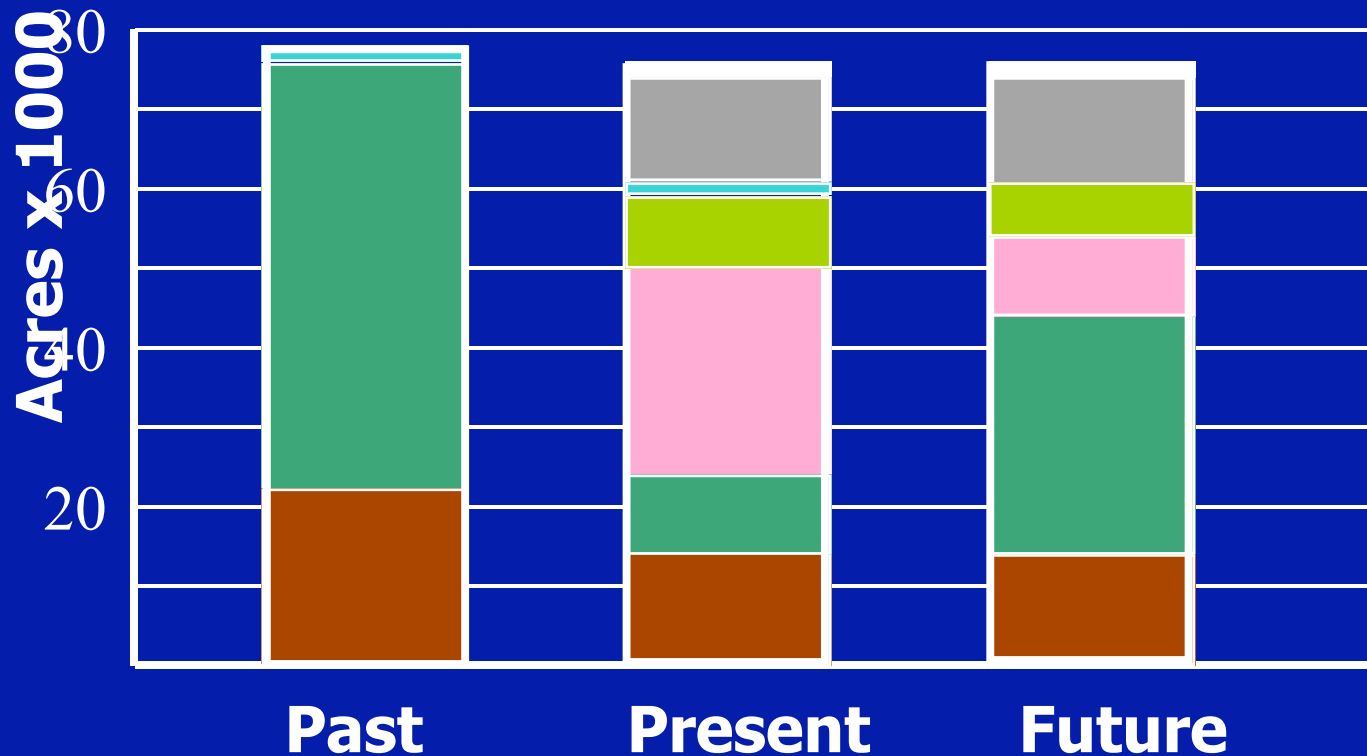
- Surrounded by over 7 million urban residents
- Drains approximately 40% of California's lands
- Encompasses about 1,600 square miles
- The largest estuary on the west coast of north and south America



# Regional Planning Efforts



# Past, Present, and Recommended Future Bayland Habitat Acreage for South Bay Subregion *from Goals Project 1999*



- Tidal Flats
- Salt Ponds
- Agricultural Baylands
- Tidal Marsh
- Diked Wetland
- Bay Fill
- other

# Salt Pond Acquisition

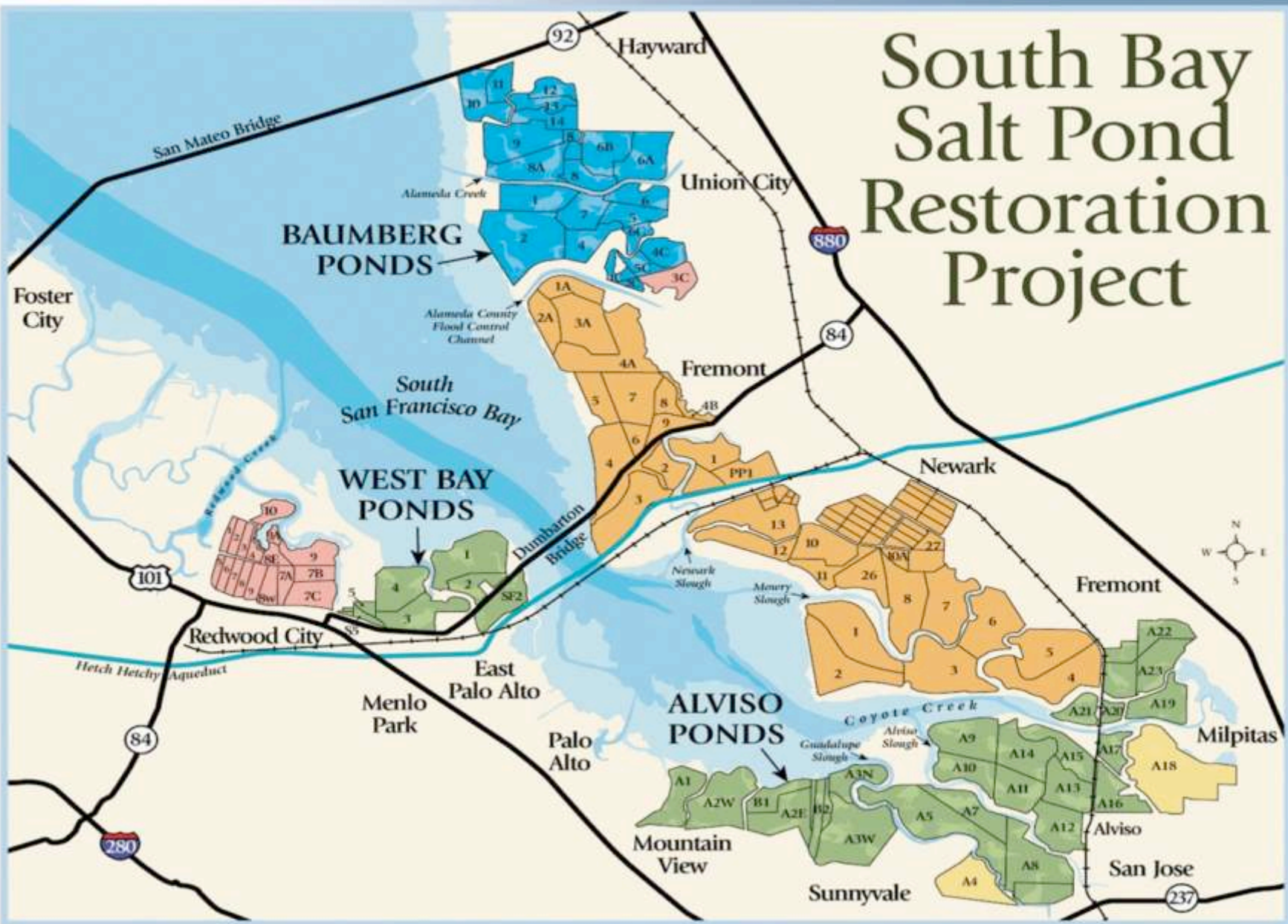


© Mark Rauzon

© Cargill Salt



# South Bay Salt Pond Restoration Project



# Cost of Acquisition

May 29, 2003 Acquisition Ceremony



- **16,500 total acres**

15,100 in south bay

1,400 along Napa river

- **\$100 million cost**

\$72M - state of California

\$8M - united states government

\$20M - Packard, Goldman, Hewlett, and  
Moore foundations

# Transfer of Ownership

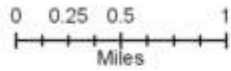
- Cargill to reduce salinity levels established by state discharge permits
- Phase out salt production over period of years
- Cargill responsible for management of ponds during phase-out period



Water quality testing during salt pond phase-out period



# Alviso Ponds



- New Intake
- New Outlet
- Breach



SOURCE:  
IKONOS Satellite - Space Imaging Inc.  
Cargill  
City of San José

DATE:  
August 24, 2004

MAP PROJECTION:  
UTM Zone 10N, NAD83 Meters

MAP BY:  
City of San José Environmental Services Department

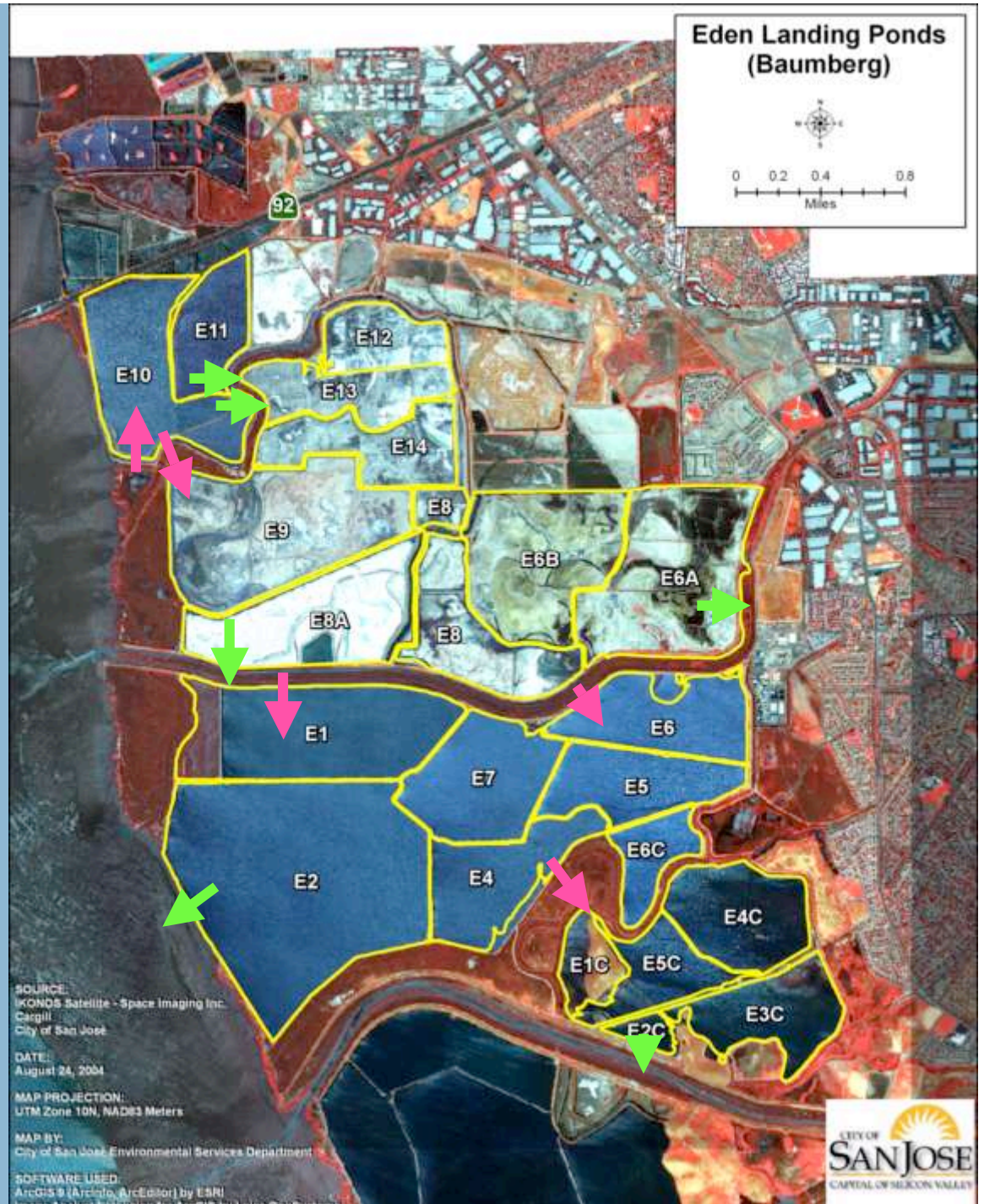
SOFTWARE USED:  
ArcGIS 9 (ArcInfo, ArcEditor) by ESRI  
Image Analyst Extension for ArcGIS by Leica GeoSystems

## Initial Stewardship Plan - Alviso

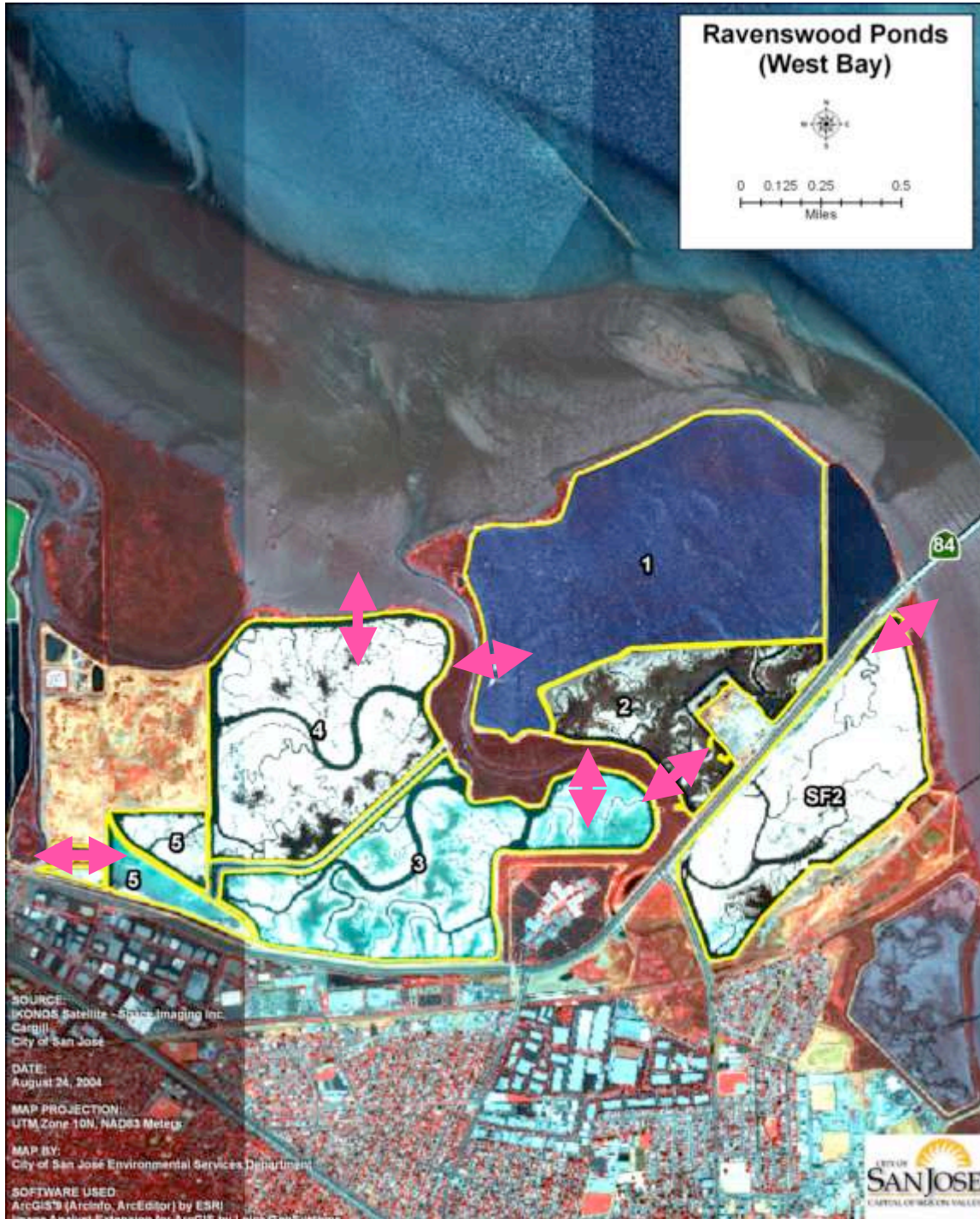


# Initial Stewardship Plan – Eden Landing

-  New Intake
-  New Outlet



**Ravenswood Ponds  
(West Bay)**



## Initial Stewardship Plan – Ravenswood

↔ New Intake & Outlet

SOURCE:  
IKONOS Satellite - Space Imaging Inc.  
Cargill  
City of San Jose

DATE:  
August 24, 2004

MAP PROJECTION:  
UTM, Zone 10N, NAD83 Meeters

MAP BY:  
City of San Jose Environmental Services Department

SOFTWARE USED:  
ArcGIS® (ArcInfo, ArcEditor) by ESRI  
Image Analyst Extension for ArcGIS 9.1 by ESRI





# South Bay Salt Pond Restoration Project



## Restoration Planning Mission

*To prepare a scientifically sound and publicly supported restoration and public access plan that can begin to be implemented within five years.*

# Long-term Restoration Goals

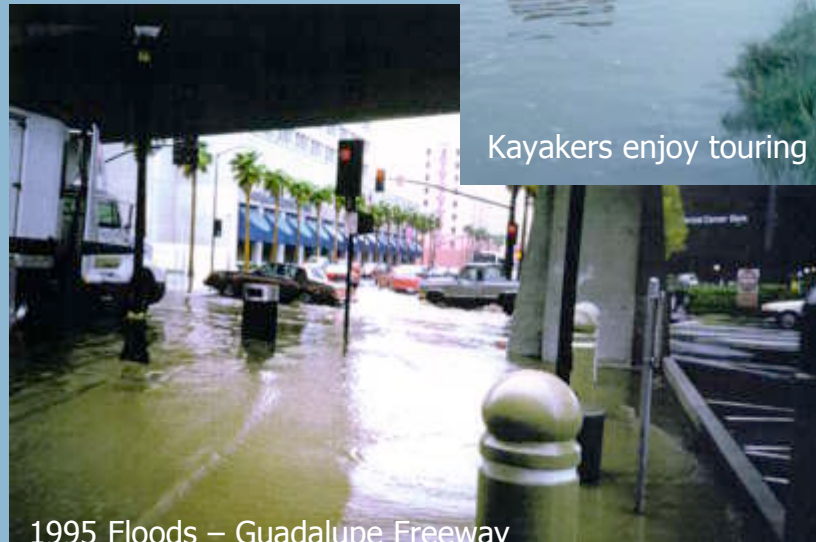
A mix of habitats

Flood management

Wildlife-oriented  
recreation



Kayakers enjoy touring the sloughs



1995 Floods – Guadalupe Freeway

# Tidal Marsh



California Clapper Rail



© Peter LaTourrette

*Chinook Salmon*



# Salt Ponds



*Western Snowy Plover*



*Northern Shoveler*



# Tidal Mudflats



© Mike Boylan



# Flood Management



'95 Floods – 1<sup>st</sup> Street & Orchard Pkwy.

Salt Pond Levees



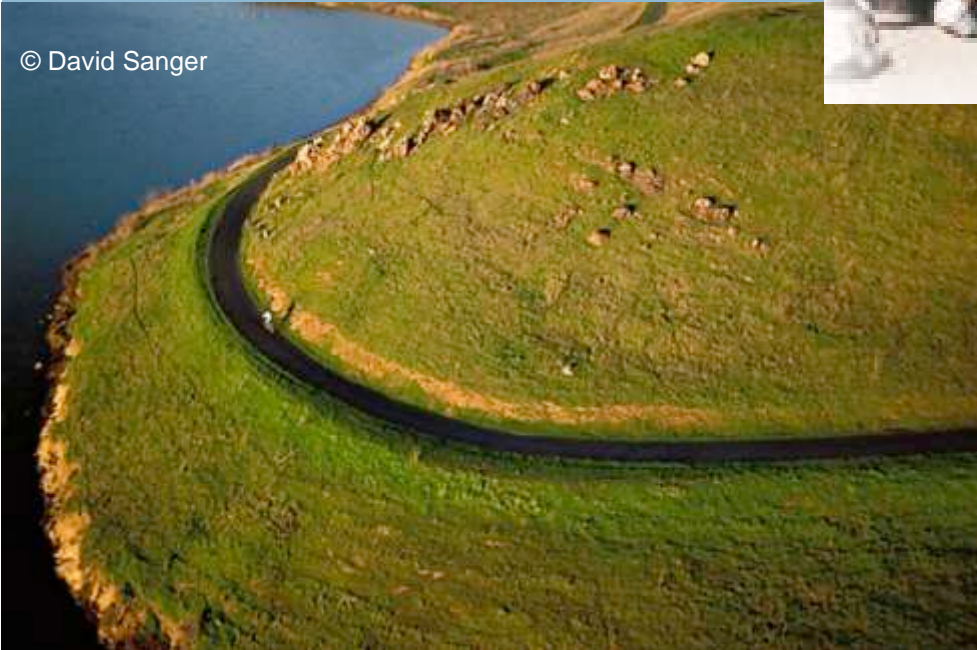
'95 Floods – Guadalupe River

# Public Access and Recreation

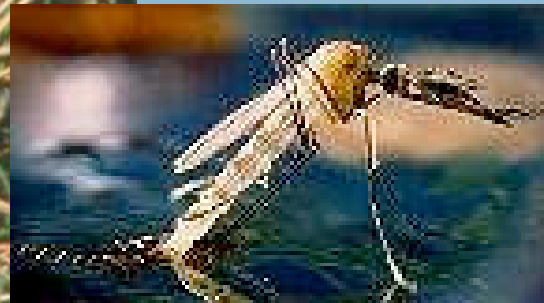
Visitors at Don Edwards National Wildlife Refuge



© David Sanger



# Technical Issues





California Environmental Protection Agency  
SAN FRANCISCO BAY REGIONAL  
WATER QUALITY CONTROL BOARD



SANTA CLARA BASIN



US Army Corps  
of Engineers®



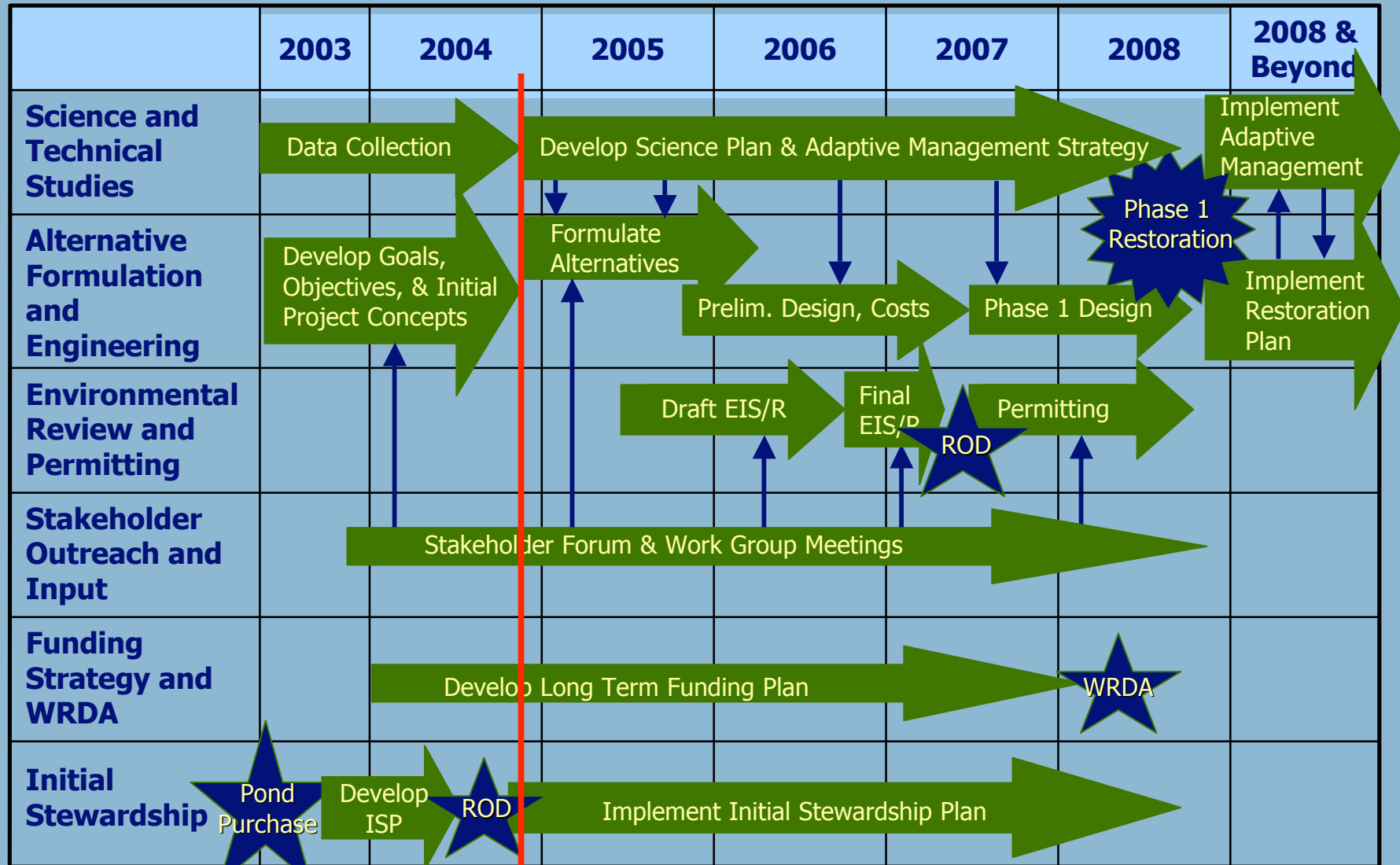
SAVE THE BAY



# South Bay Salt Pond Restoration Project Restoration Program Plan



# SBSP Project Schedule & Process



Today



# South Bay Salt Pond Restoration Project



## What You Can Do

- **Contact the SF Bay National Wildlife Refuge**
  - Visit the Refuge & Tour the Salt Ponds
  - Volunteer as tour docent
- **Stay informed**
  - Visit [www.southbayrestoration.org](http://www.southbayrestoration.org)
  - Add your name to our mailing list to receive regular electronic updates about the status of the project
  - Attend public meetings
  - Participate in a work group
- **Schedule a presentation in your community**



# South Bay Salt Pond Restoration Project



## **Clyde Morris**

Don Edwards san Francisco bay national wildlife refuge  
Clyde\_morris@fws.gov or 510/792-0222

## **Carl Wilcox**

California department of fish and game  
CWilcox@dfg.ca.gov or 707/944-5525

## **Amy Hutzel**

California state coastal conservancy  
ahutzel@scc.ca.gov or 510/286-4180

## **To schedule a speaking presentation:**

Caroline Warner

San Francisco bay joint venture

Cwarner@sfbayjv.org or 415/883-3854

Web site: [www.southbayrestoration.org](http://www.southbayrestoration.org)