



South Bay Salt Pond Restoration Project

Restoring the Wild Heart of the South Bay

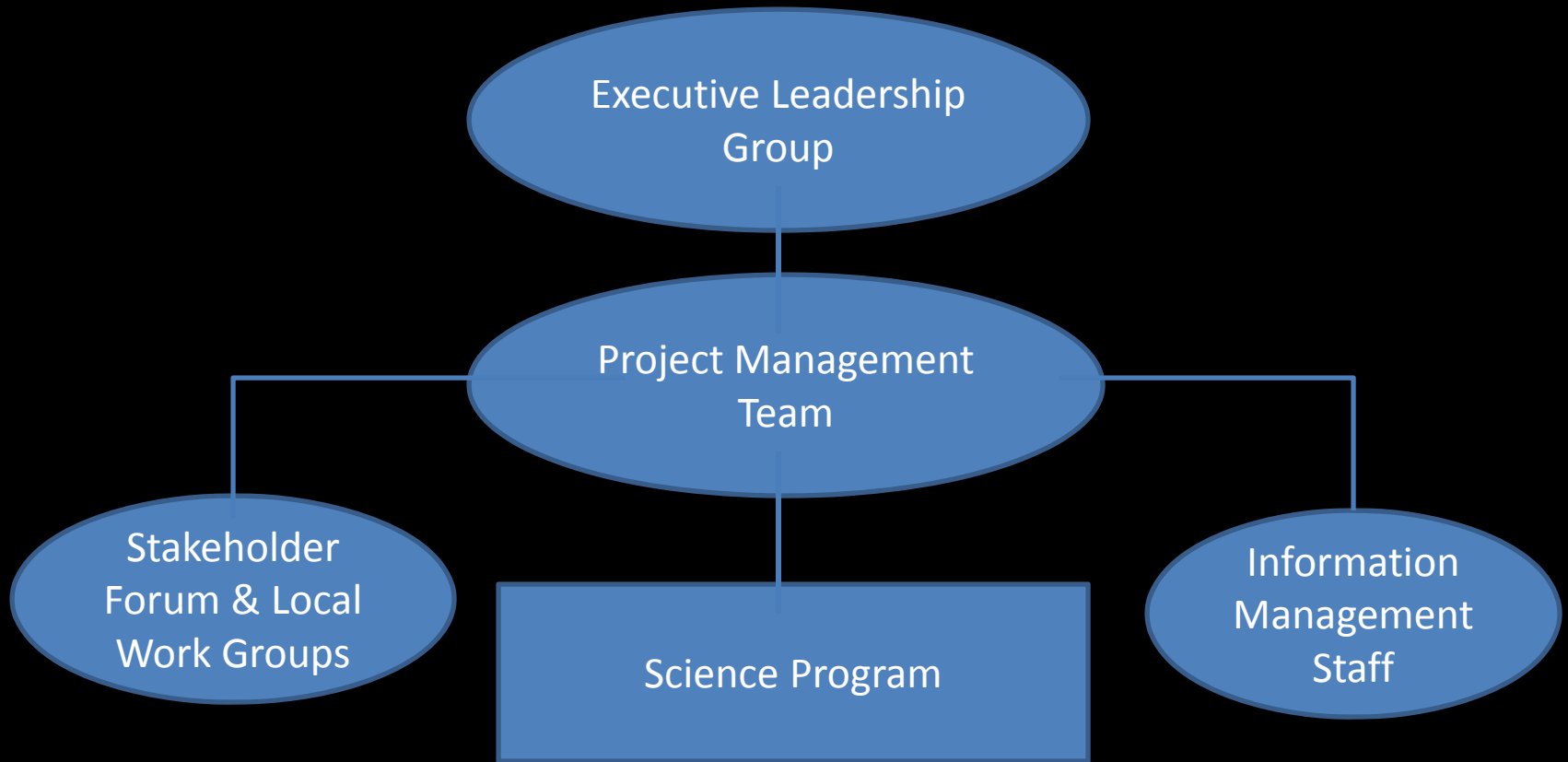
Pre-Submittal Meeting for Phase II Request for Services

23 September 2011, 10 a.m. - 12 p.m.

Today's Agenda

- Project Overview
- Guiding Principles
- Preliminary Phase 2 concepts
- What are We Looking For?
- Scoring Criteria

Project Management & Funding



Project Funding

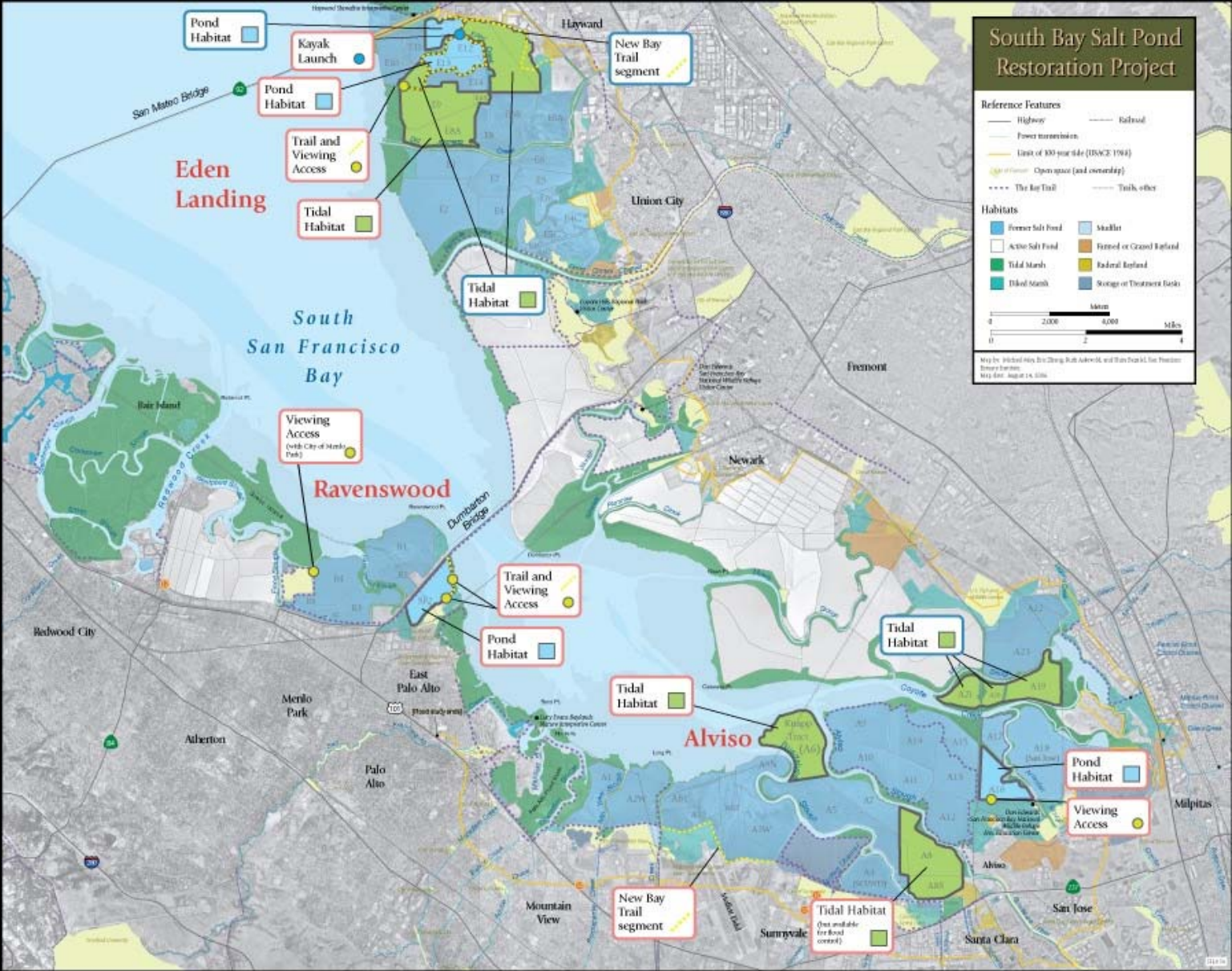
- Federal funds
 - Appropriations
 - Grants (e.g. ARRA)
- Mitigation/penalty funds (e.g. CalTrans)
- Local funds (e.g. Water Districts)
- State funds (e.g. SCC & WCB bond funding, grants)

Programmatic and Phase I
Projects EIS/R completed January
2009

Available at *www.southbayrestoration.org*

Phase I Restoration and Public Access Projects

Tracking our Progress: Phase One Actions



Initial Restoration Actions
South Bay Salt Pond Restoration Project

2006 - 08 S BSP Phase 1

Habitat evolution after restoration



April 2008



September 2009

C. Benton

Salt Pond A21

Phase 2: Overview

Guiding Principles

“Do no harm”: no actions
that will increase flood risk

Progress toward 50-50 vision
(from EIR)

Primary Evaluation Criteria

- Likelihood of progress toward Project objectives
- Opportunities for Adaptive Management studies
- Value in building Project support
- Readiness to proceed
- Not dependent on precedent actions (e.g., construction of a flood levee)

Project Wide Actions

Beneficial re-use of dredge materials

Eden Landing Phase 2 Proposed Projects

Figure ES-3a. Alternative B:
Managed Pond Emphasis
Eden Landing, Year 50



Alviso Phase 2 Proposed Projects

South Bay Salt Pond Restoration Project

Project Area

Infrastructure Features

- Highway
- Railroad
- Wastewater Outfall
- PG & E Access Points
- Hetch Hetchy Aqueduct
- Overhead Power Transmission Line
- Sewer Force Main
- Distribution Line

Habitat Features

- Tidal Habitat
- Upland Transition Area
- Managed Pond
- Managed Pond (outside project area)
- Initially Reversibly Tidal; Ultimately Tidal

Flood Management Features

- Proposed Flood Protection Levee
- High Ground*
- Existing Levee Outside Project Area* (includes engineered flood protection levees and non-engineered levees)

*Level of flood protection not specified.

Note: Levees along creeks extend upstream of the endpoints shown. All levee and high ground locations are approximate.

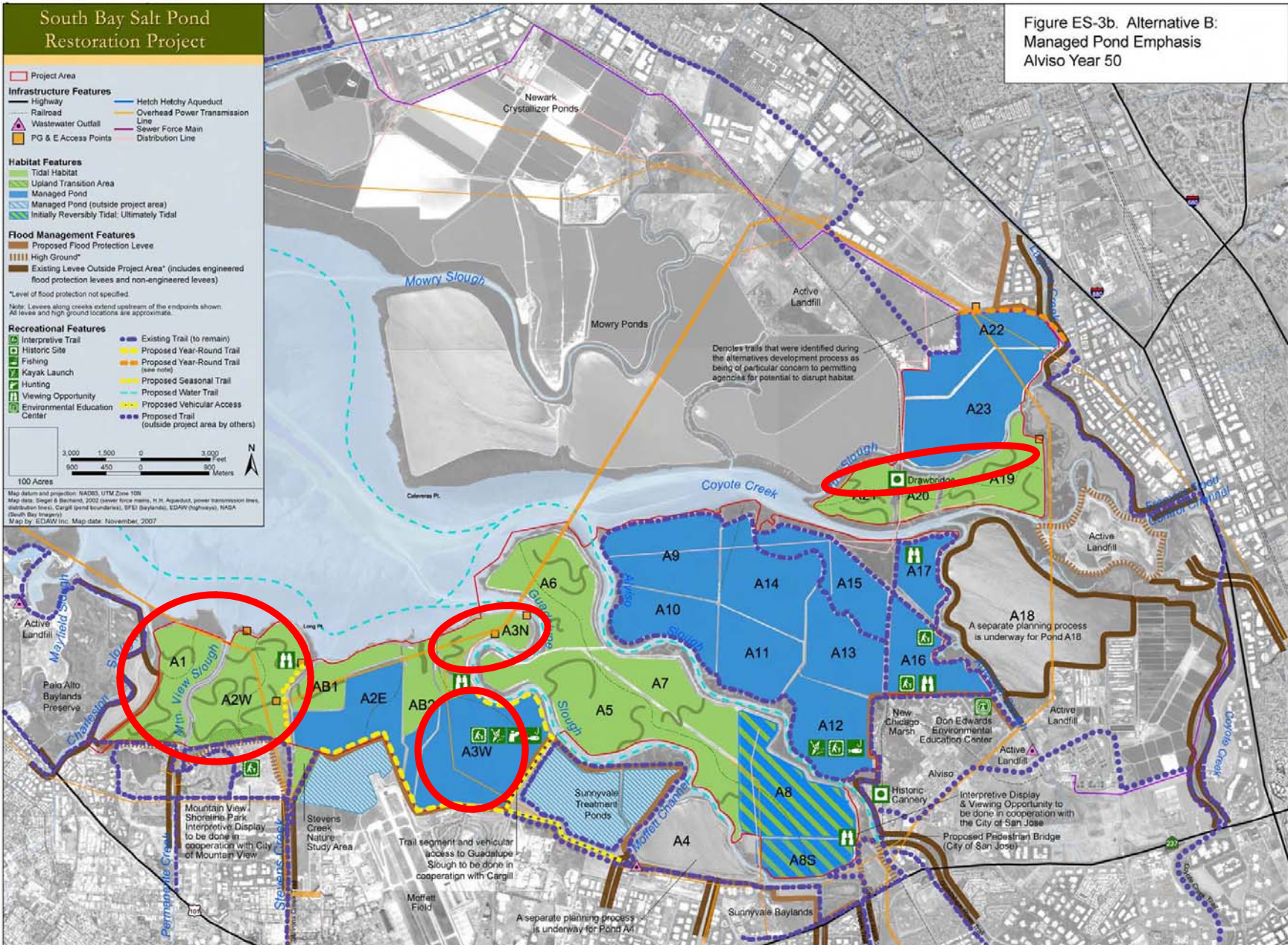
Recreational Features

- Interpretive Trail
- Historic Site
- Fishing
- Kayak Launch
- Hunting
- Viewing Opportunity
- Environmental Education Center
- Existing Trail (to remain)
- Proposed Year-Round Trail
- Proposed Seasonal Trail (see note)
- Proposed Winter Trail
- Proposed Vehicular Access
- Proposed Trail (outside project area by others)

Scale: 0 to 3,000 feet / 0 to 900 meters. 100 Acres.

Map datum and projection: NAD83, UTM Zone 10E.
 Map data: Cargill & Blackland, 2002 (center force main, H. H. Aqueduct, power transmission lines, distribution lines, Cargill parcel boundaries), SFSU (Baylands), ED&M (highways), NADA (South Bay Ingress).
 Map by: ED&M Inc. Map date: November, 2007

Figure ES-3b. Alternative B: Managed Pond Emphasis Alviso Year 50



Ravenswood Phase 2 Proposed Projects

South Bay Salt Pond Restoration Project

Figure ES-3c. Alternative B: Managed Pond Emphasis Ravenswood, Year 50

Project Area

Infrastructure Features

- Highway
- Railroad
- Overhead Power Transmission Line
- Sewer Force Mains
- Distribution Line

Recreational Features

- Existing Trail (to remain)
- Existing Trail (to be removed)
- Proposed Year-Round Trail
- Proposed Year-Round Trail (see note)
- Proposed Trail (outside project area by others)
- Proposed Water Trail

Habitat Features

- Tidal Habitat
- Upland Transition Area
- Managed Pond
- Tidal Habitat (outside project area)

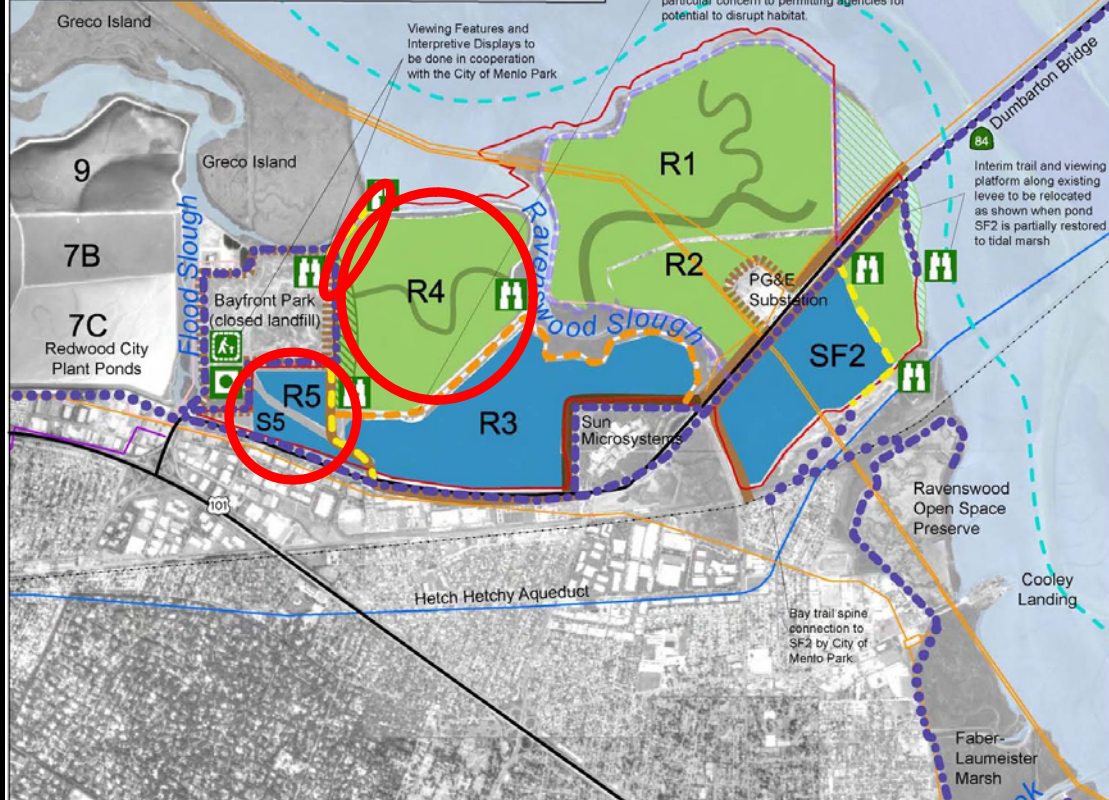
Flood Management Features

- Proposed Flood Protection Levee
- High Ground*
- Existing Levee Outside Project Area* (includes engineered flood protection levees and non-engineered levees)

*Level of flood protection not specified.

Note: Levees along creeks extend upstream of the endpoints shown. All levee and high ground locations are approximate.

Map datum and projection: NAD83, UTM Zone 10N
 Map data: Siegel & Bachand, 2002 (sewer force mains, H.H. Aqueduct, power transmission lines, distribution lines), Cargill (pond boundaries), SFEI (baylands), EDAW (highways), NASA (South Bay Imagery), Project Boundary taken from SFEI Interactive Map
 Map by: EDAW Inc. Map date: November, 2007



Key uncertainties

- **Wildlife use of changing habitats**
- **Habitat evolution and sediment dynamics**
- **Mercury methylation**
- **Water quality**
- **Invasive species**
- **Public access**
- **Infrastructure support**
- **Sea level rise and climate change**



R. Wilming



What are we looking for?

- Consultant shall furnish all necessary labor, facilities, equipment, and materials to complete work
- Available to meet with Conservancy, FWS, and DFG as needed and keep advised of work products
- Lead consultant may subcontract for work – all members of team should be described in submittal
- Project Manager should be an employee of lead firm
- Project Manager and key staff must be made available for duration of project

What are we looking for?

- Project Manager and Key Staff
 - Demonstrated organizational skills
 - Proven track record of delivering on-time
 - Experience managing large, complex projects that involve competing objectives
 - Excellent interpersonal, and written and oral communication skills
 - Experience at making presentations to and interacting effectively with wide range of audiences
 - Prior experience working together

What are we looking for?

- Technical Knowledge and Experience of Key Staff
See list in RFP
- Familiarity with relevant stakeholders
- Familiarity with the technical, regulatory, and policy issues regarding wetlands restoration, flood management, and public access in San Francisco Bay
- Willingness to commit resources to the project, and commitment to making resources available when needed
- Continuity in the project team (low turnover)

Evaluation of Submittals

- Scoring of submittals by FWS, DFG, SCC, Lead Scientist, and other invited reviewers
- Top 3 to 4 firms will be interviewed
- Interviewers will include FWS, DFG, SCC, Lead Scientist, and other invited interviewers
- Final score (for selection of highest ranked firm) will be a combination of submittal score and interview score

Evaluation of Submittals

Scoring of submittal based upon following factors

- Demonstrated competence, including:
 - Specialized qualifications (technical skills): *25 points*
 - Firm/team's past experience with similar projects in Bay Area: *15 points*
 - Education and experience of key personnel: *10 points*
 - Firm/team's management approach, including ability to meet project schedule : *20 points*
 - Firm/team's technical approach: *15 points*
- Overall quality of the firm/team: *15 points*
 - Nature and quality of past completed work
 - Experience working as team
 - Clarity and completeness²⁵ of submittal

Evaluation of Submittals

- After scoring of submittals, Conservancy will also take into account (as tie breaker):
 - Small Business Enterprises (SBEs)
 - Disabled Veteran Business Enterprises (DVBEs)
 - Good faith effort to subcontract DVBEs.
- SBEs and/or DVBEs must be certified as such by State Department of General Services - Office of Small Business and DVBE Certification
- Contract will be awarded without discrimination based on color, race, religion, sex, or national



John Bourgeois

California Coastal Conservancy

jbougeois@scc.ca.gov or 408/314-8859

Eric Mruz

Don Edwards San Francisco Bay National Wildlife Refuge

Eric_Mruz@fws.gov or 510/792-0222

Brenda Buxton

California Coastal Conservancy

bbuxton@scc.ca.gov or 510/286-0753

John Krause

California Department of Fish and Game

jkrause@dfg.ca.gov or 415/250-0243

www.southbayrestoration.org or, follow us on Facebook

facebook



Name:
South Bay Salt
Pond Restoration
Project