

Cooley Landing Tidal Restoration: 10 Years After

Ron Duke¹ and Michelle Orr²

Contributors:

Max Busnardo¹, Donna Ball¹, Ellery Mayence¹,
Nick Garrity², Mark Lindley², Jeff Haltiner²
Mike Rafferty³, Kinsley Binard³



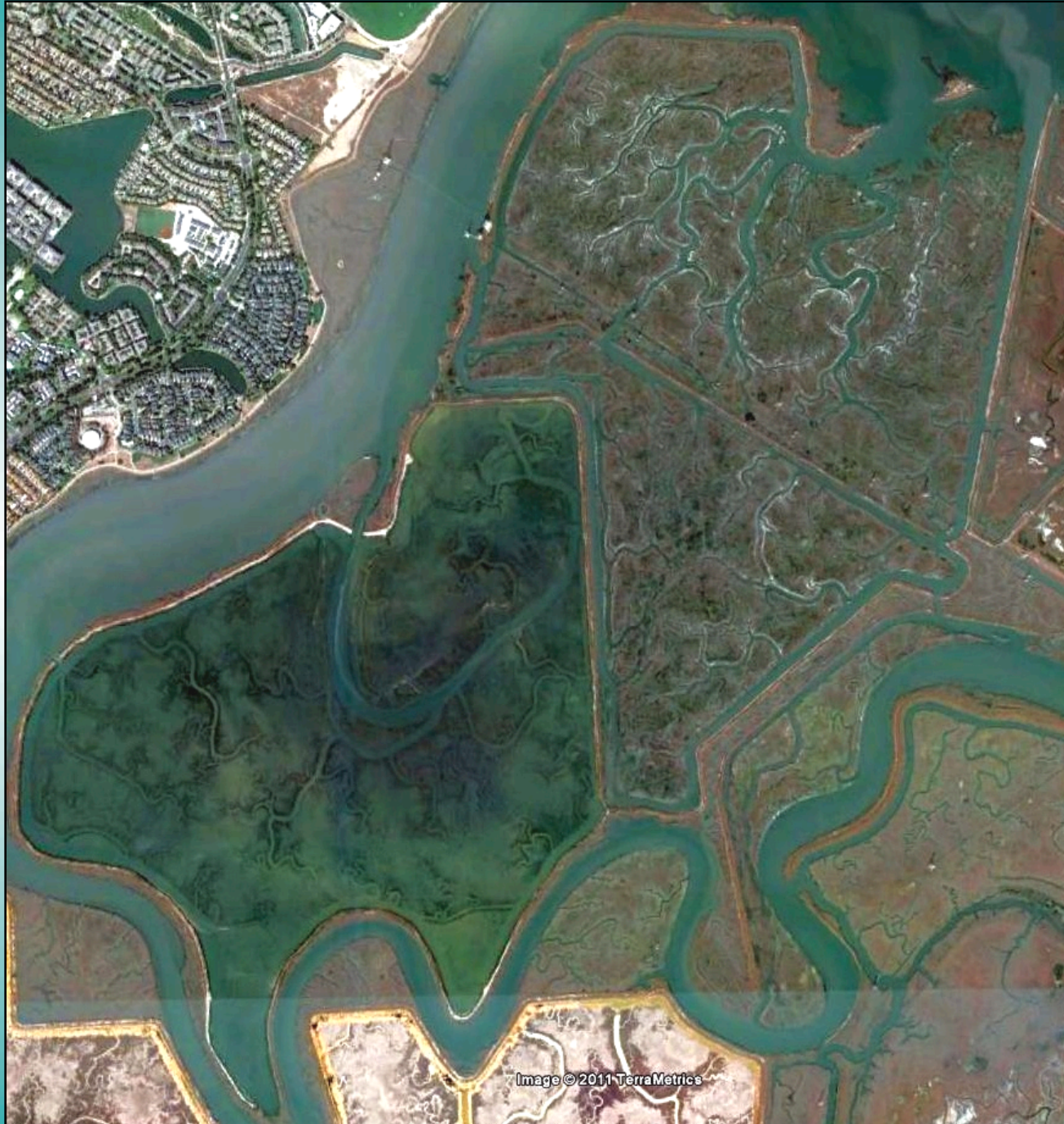
H. T. HARVEY & ASSOCIATES¹
ECOLOGICAL CONSULTANTS

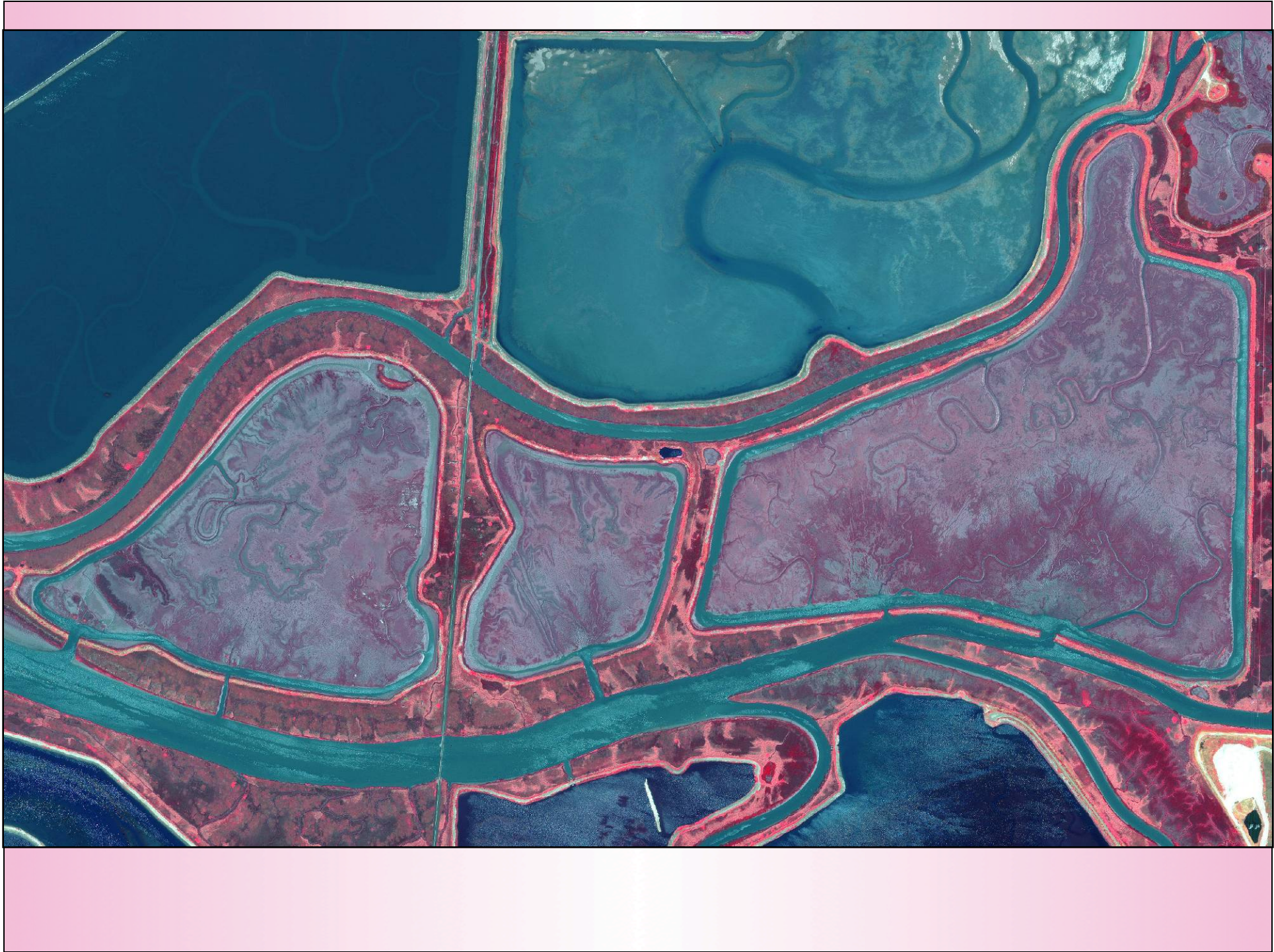


Acknowledgments to:
S.S. Papadopoulos & Associates, Inc.³
and StarLink Logistics Inc.





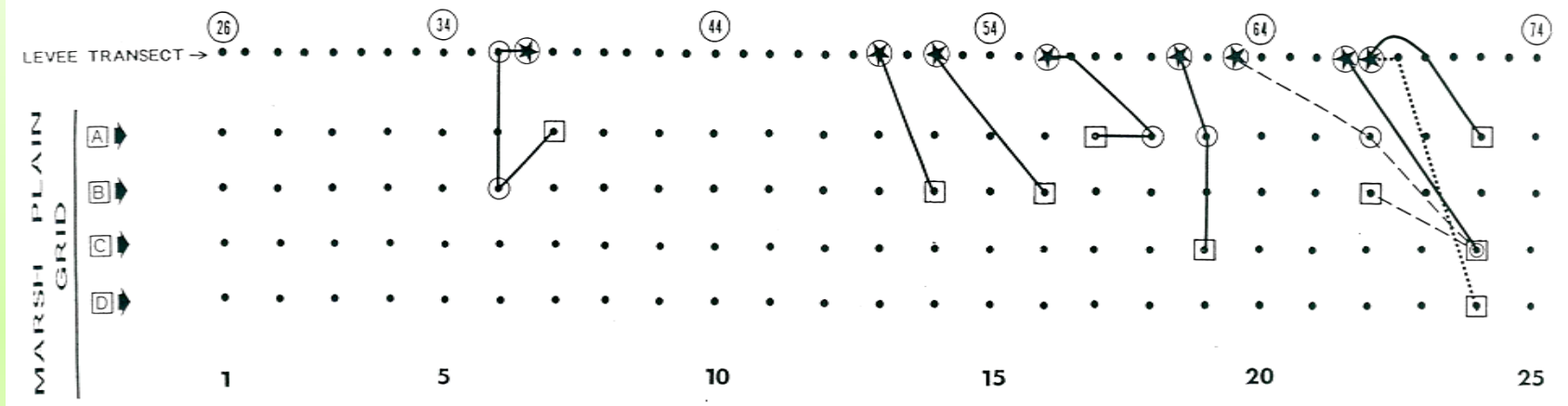






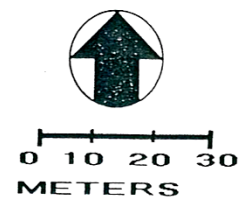


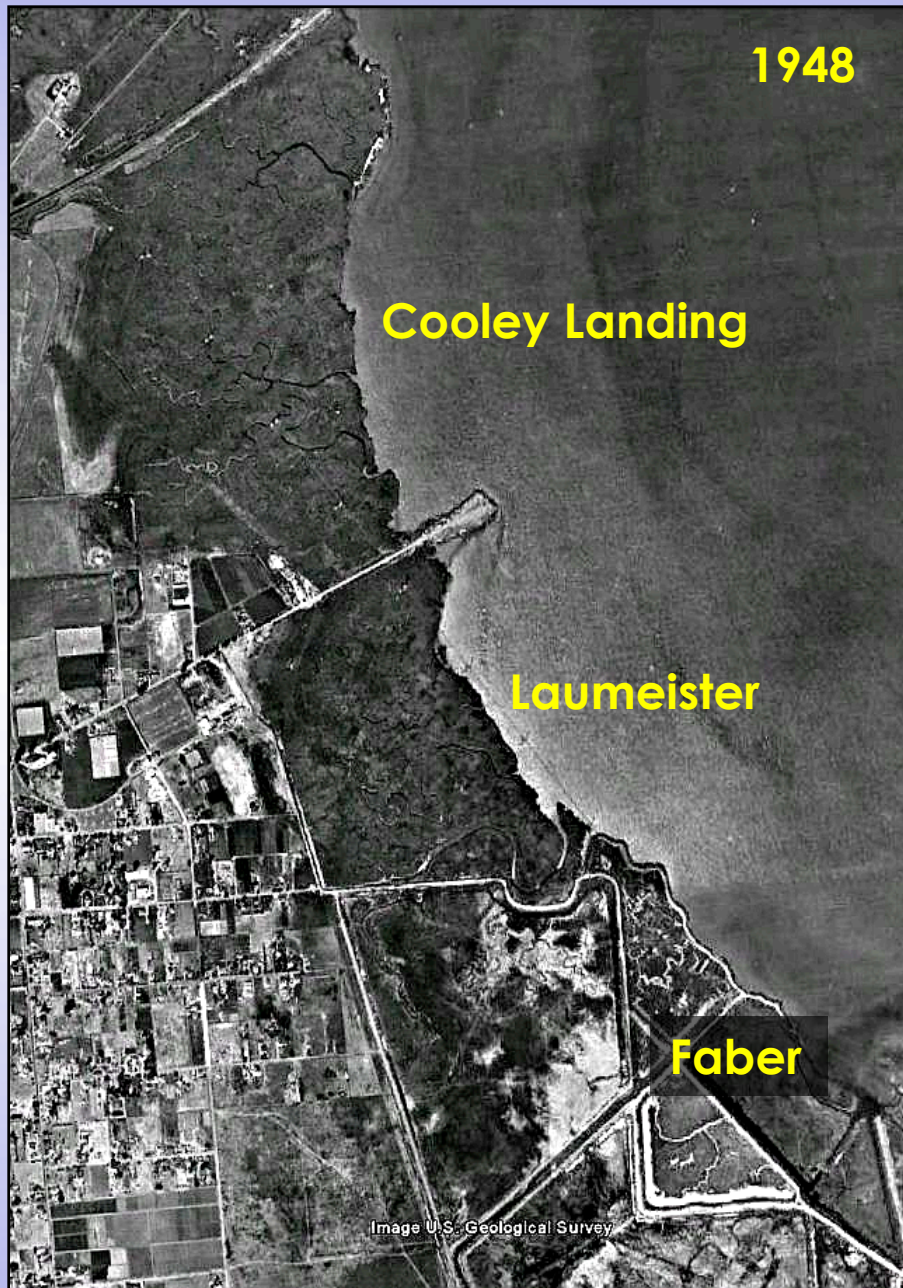
CALAVERAS POINT: MOVEMENT OF SALT MARSH HARVEST MICE FROM MARSH PLAIN TO LEVEE 4/18/90 - 4/29/90

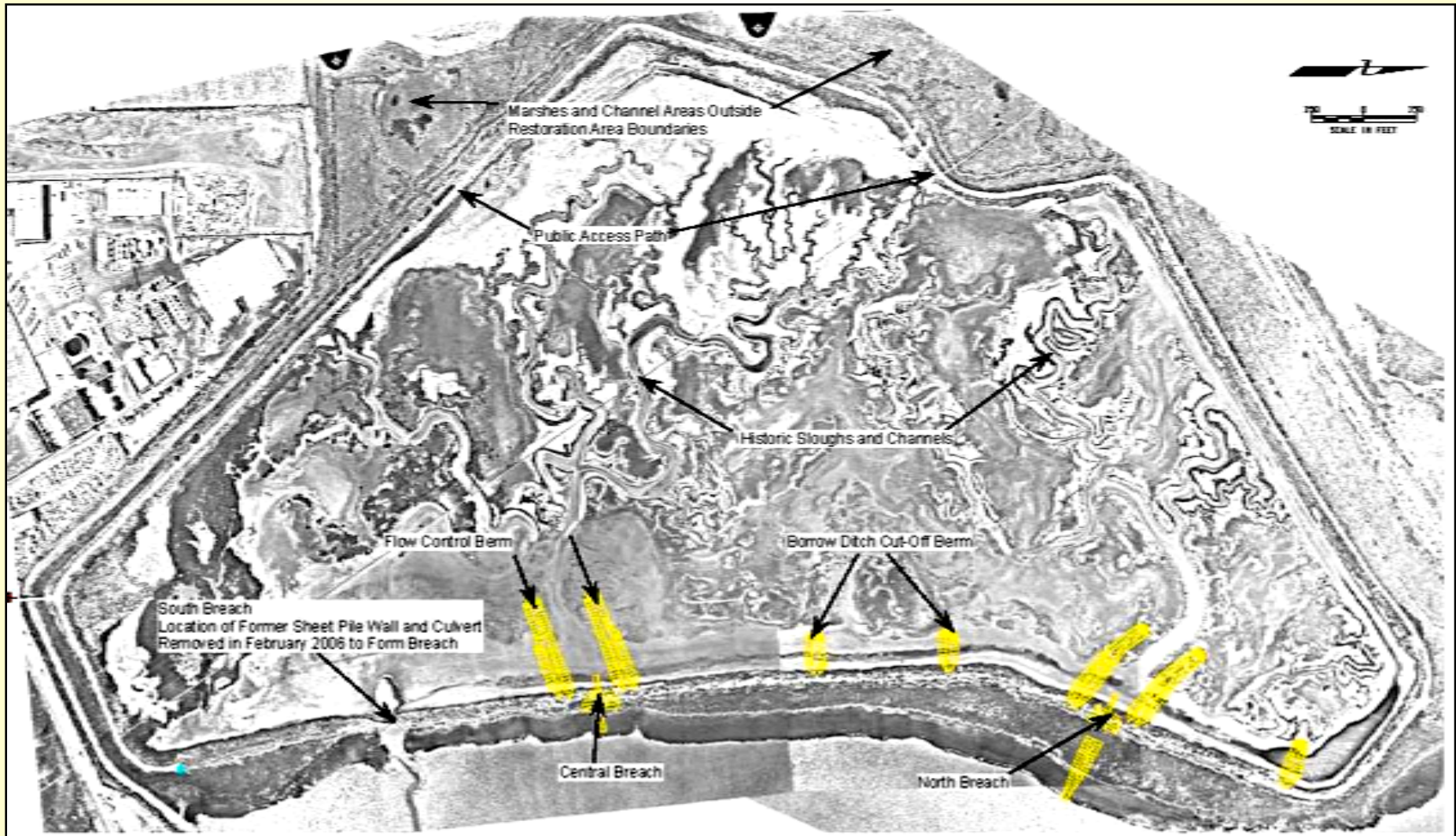


SYMBOLS:

- TRAP STATION
- ◻ STATION OF FIRST CAPTURE
- ★ STATION OF LAST CAPTURE
- STATION OF CAPTURE BETWEEN FIRST AND LAST

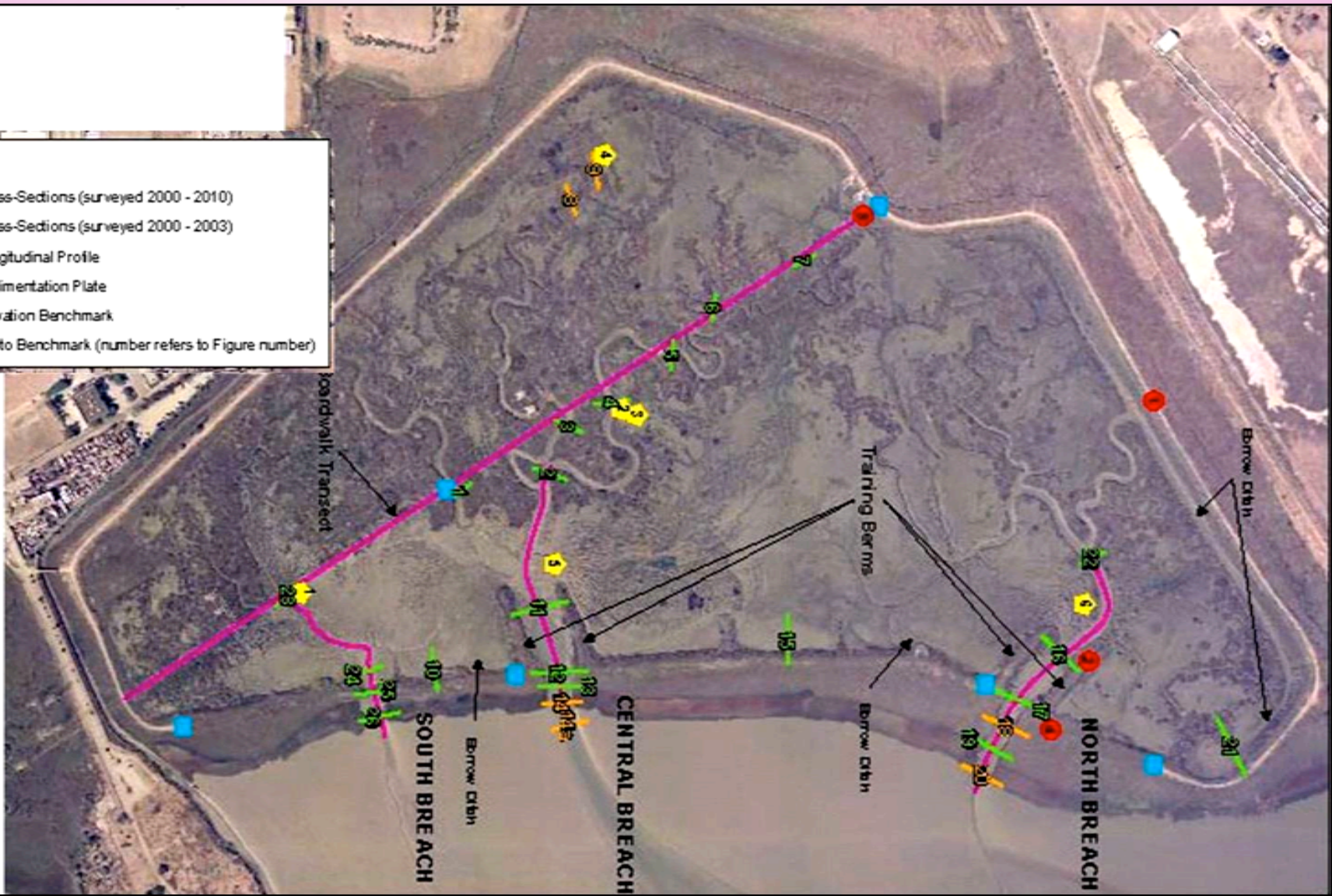






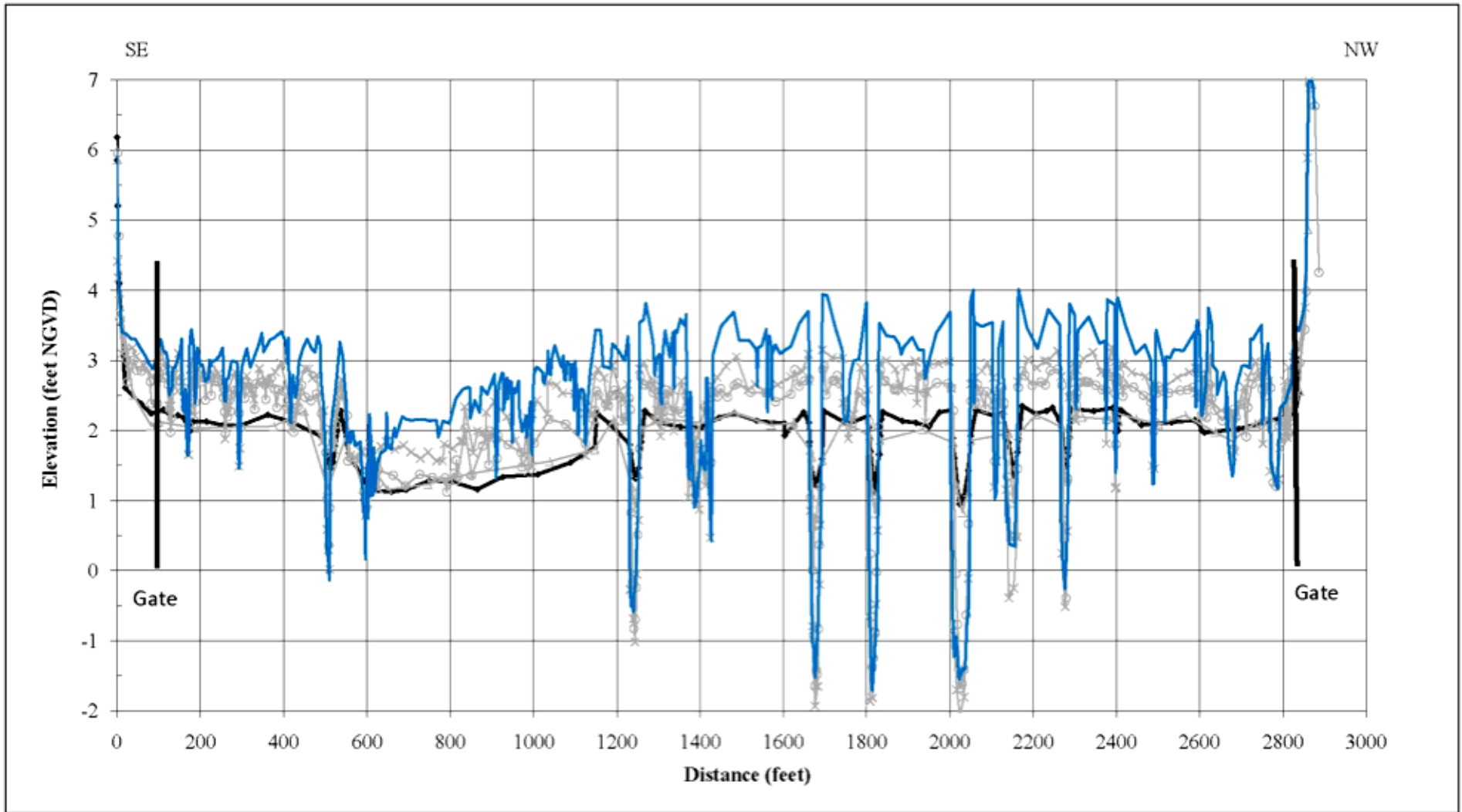
Legend

- Cross-Sections (surveyed 2000 - 2010)
- Cross-Sections (surveyed 2000 - 2003)
- Longitudinal Profile
- Sedimentation Plate
- Elevation Benchmark
- Photo Benchmark (number refers to Figure number)









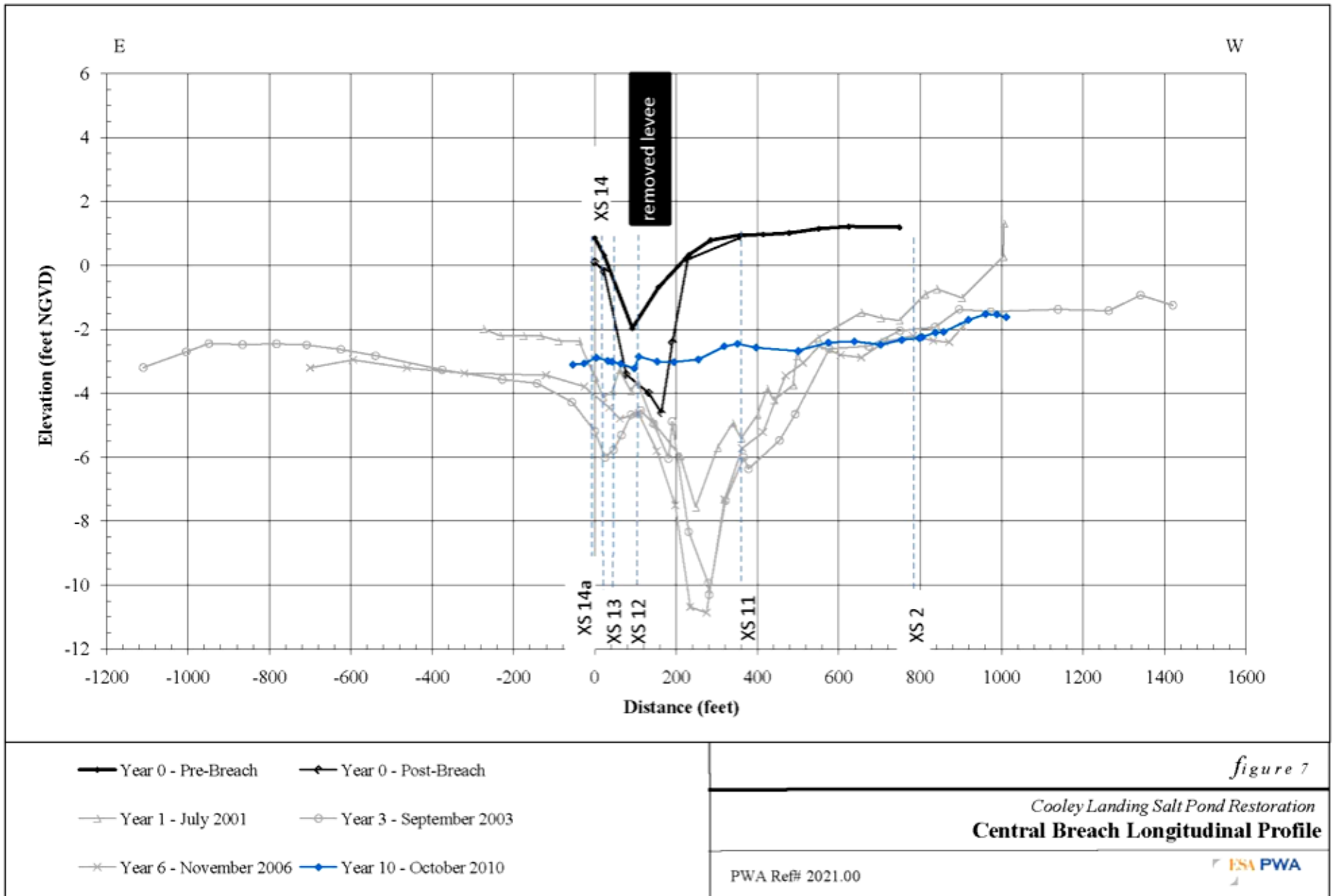
- Year 0 - December 2000
- Year 1 - September 2001
- Year 3 - September 2003
- Year 6 - October 2006
- Year 10 - October 2010

figure 10

Cooley Landing Salt Pond Restoration
Boardwalk Transect

PWA Ref# 2021.00







2006



2010



Photo credit:



2000

Photo credit:
ESA PWA



2010





Photo credit:
ESA PWA



Photo credit:





Photo credit:



