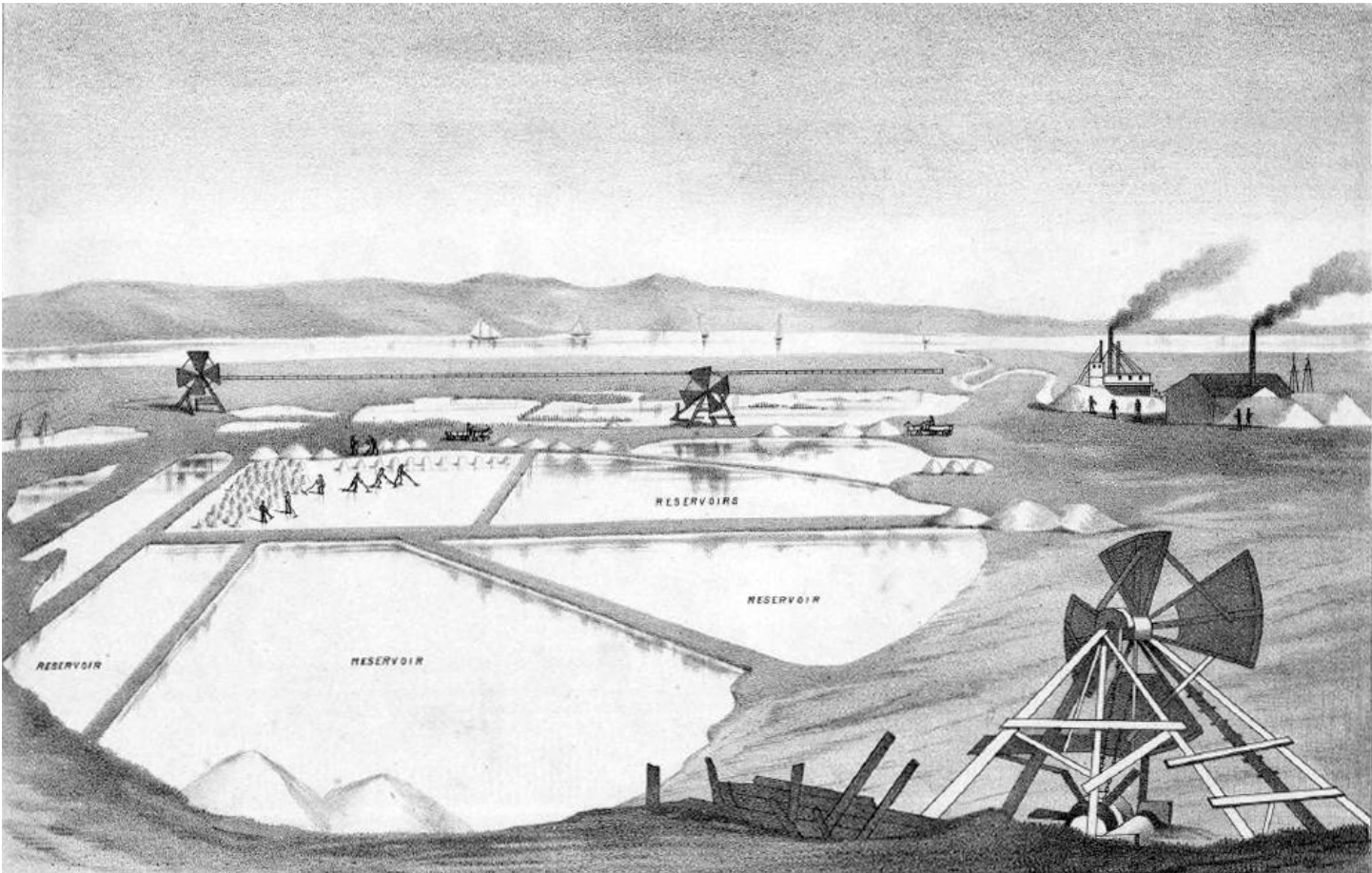


Source: Thompson & West Atlas of Alameda County, 1878

Figure 1: Johnson's Landing



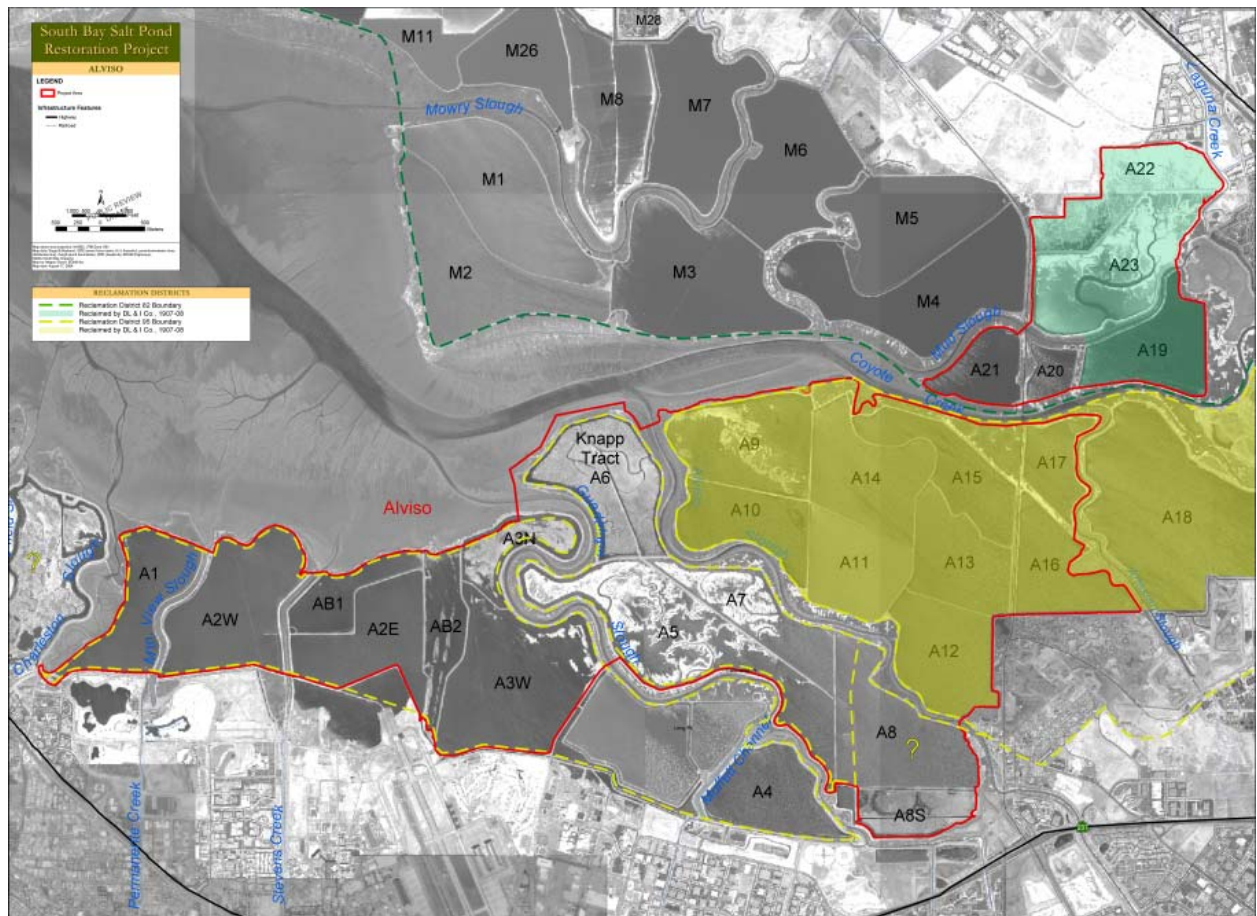
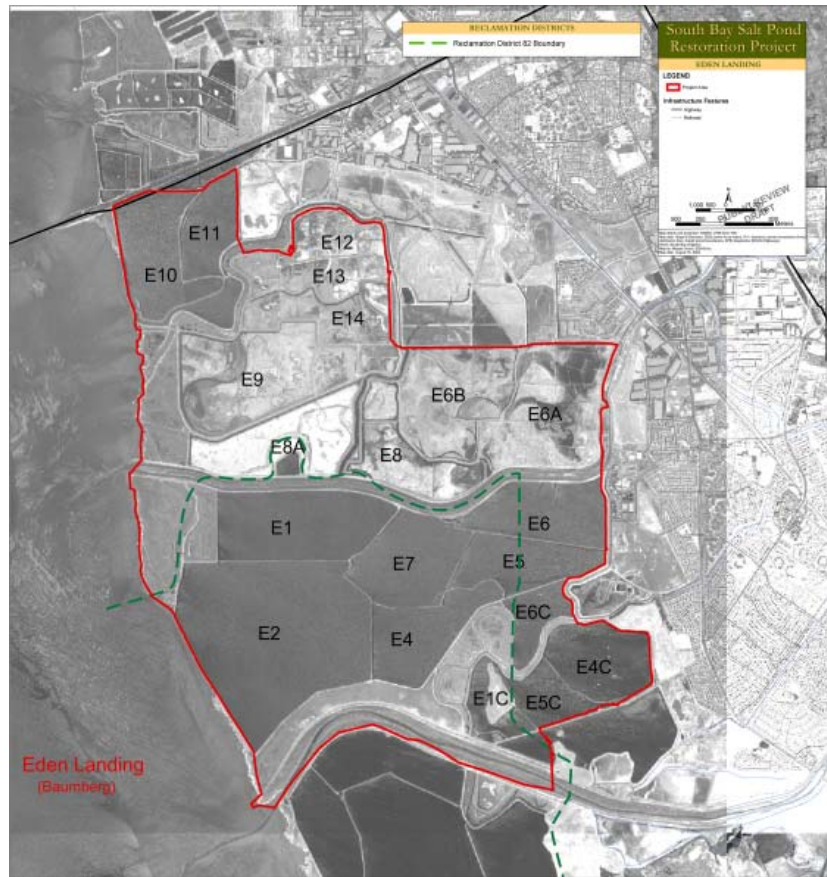
Source: Thompson & West Atlas of Alameda County, 1878

Figure 2: Alvarado Salt Works



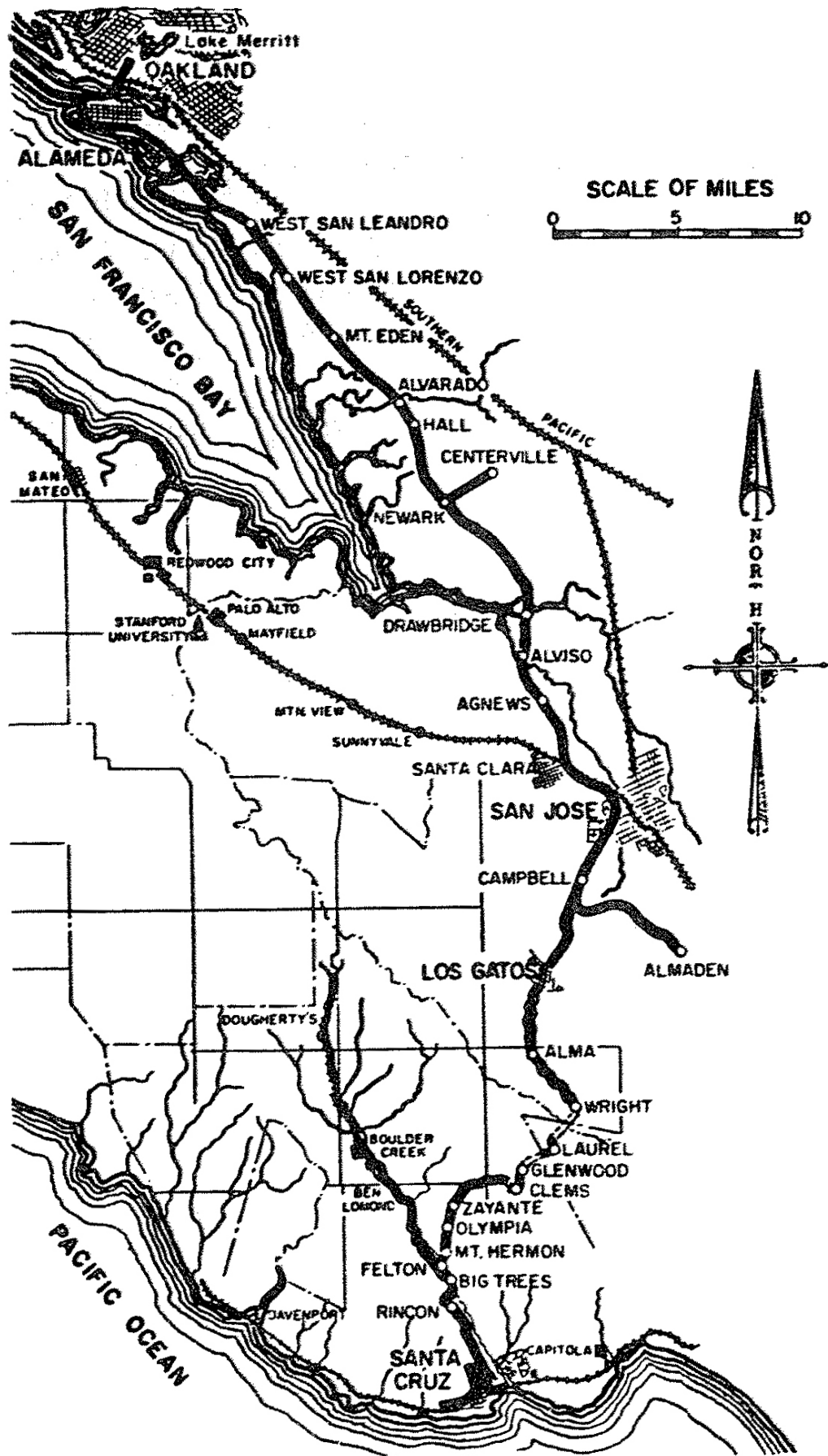
Source: U.S. Coast and Geodetic Society, 1907

Figure 3: San Francisco Bay



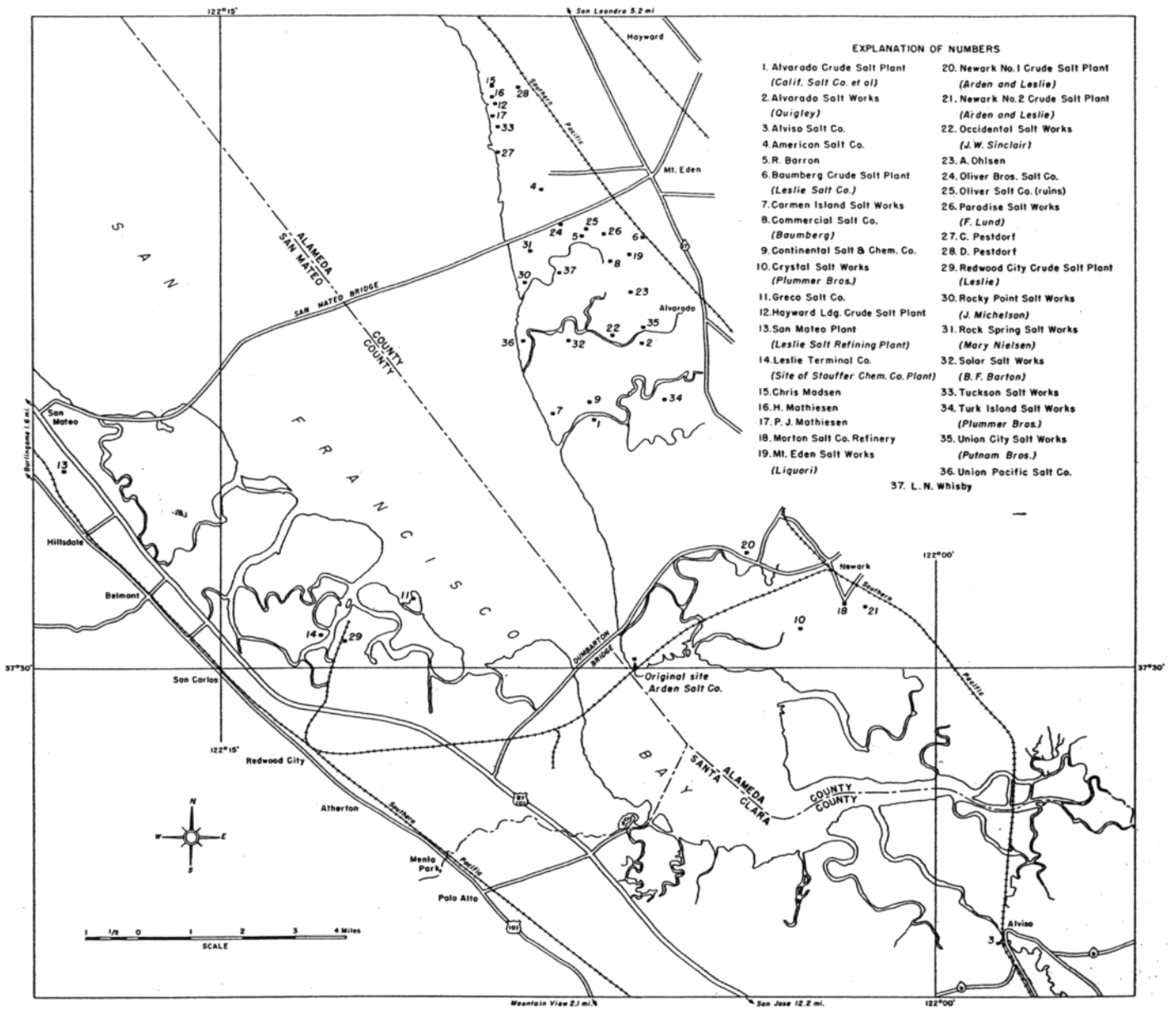
Source: Claire Lopez report, 1971

Figure 4: Reclamation Districts



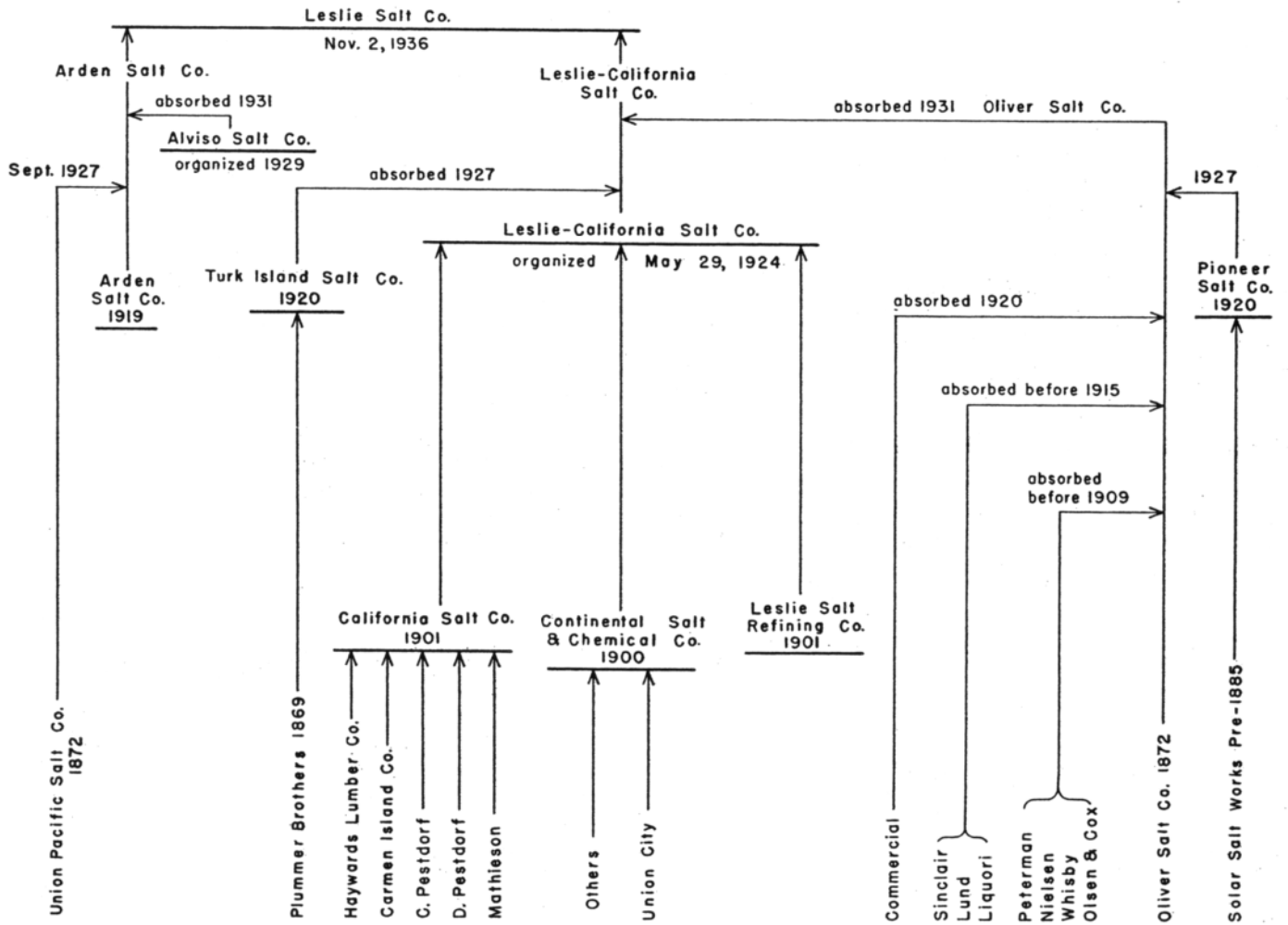
Source: McGregor, 1968

Figure 5: South Pacific Coast Railroad, 1886



Source: Ver Plank, 1958

Figure 6: Map of San Francisco Bay Showing Locations of Salt Works



Source: Ver Plank, 1958

Figure 7: Consolidation of San Francisco Bay Salt Industry

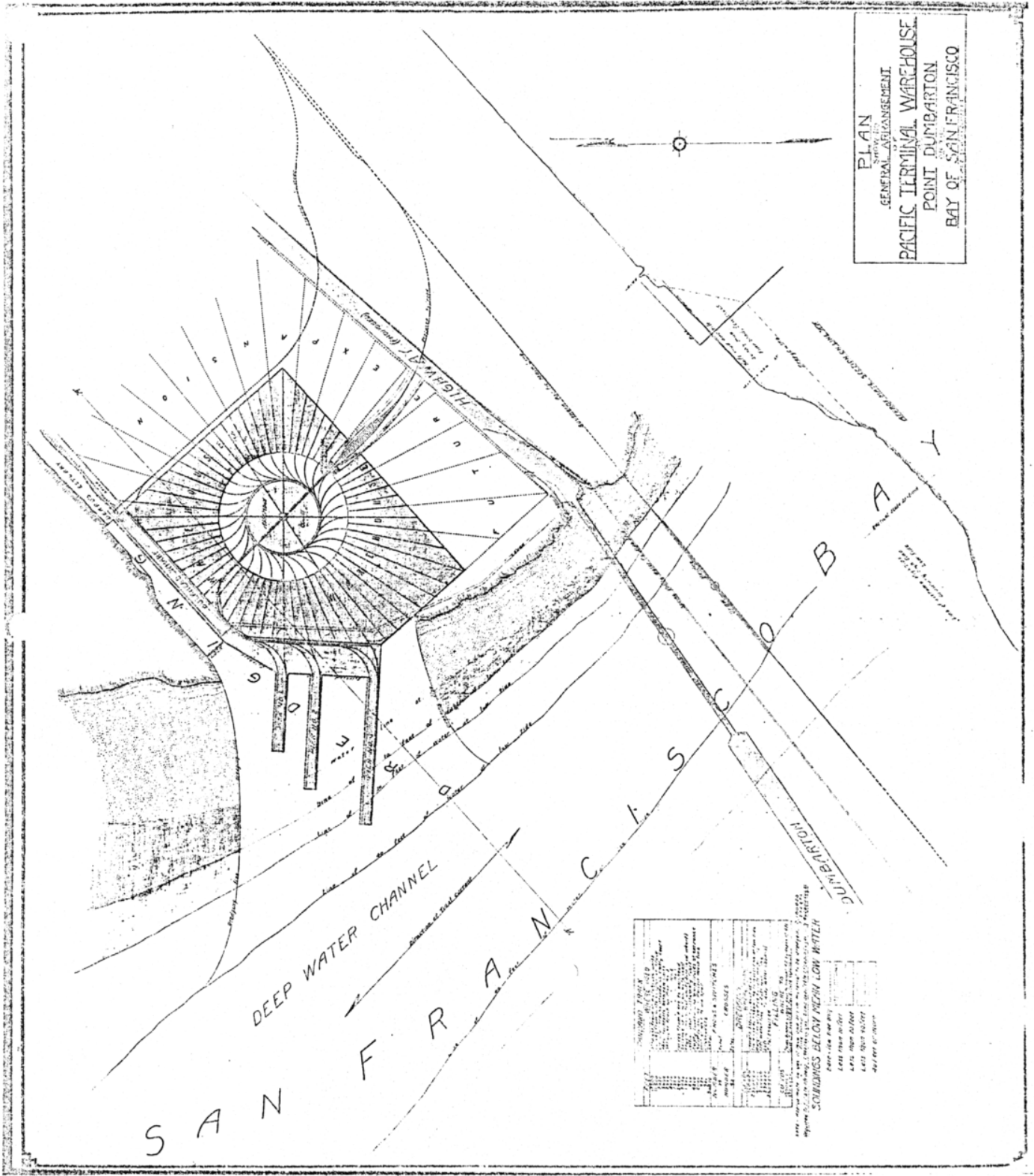


Figure 8: Plan of Pacific Terminal Warehouse

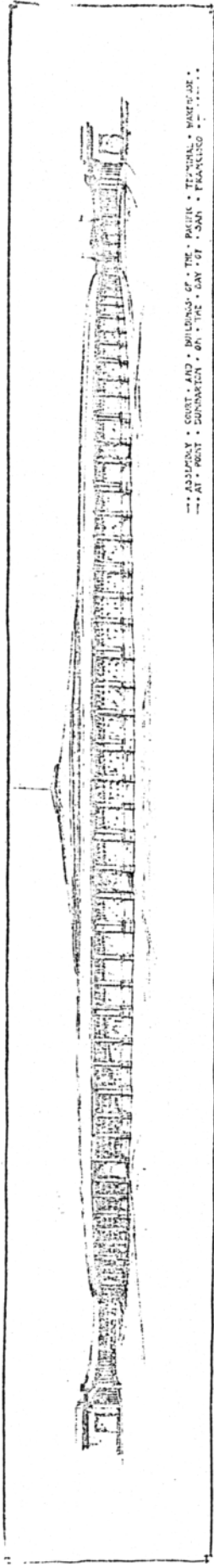
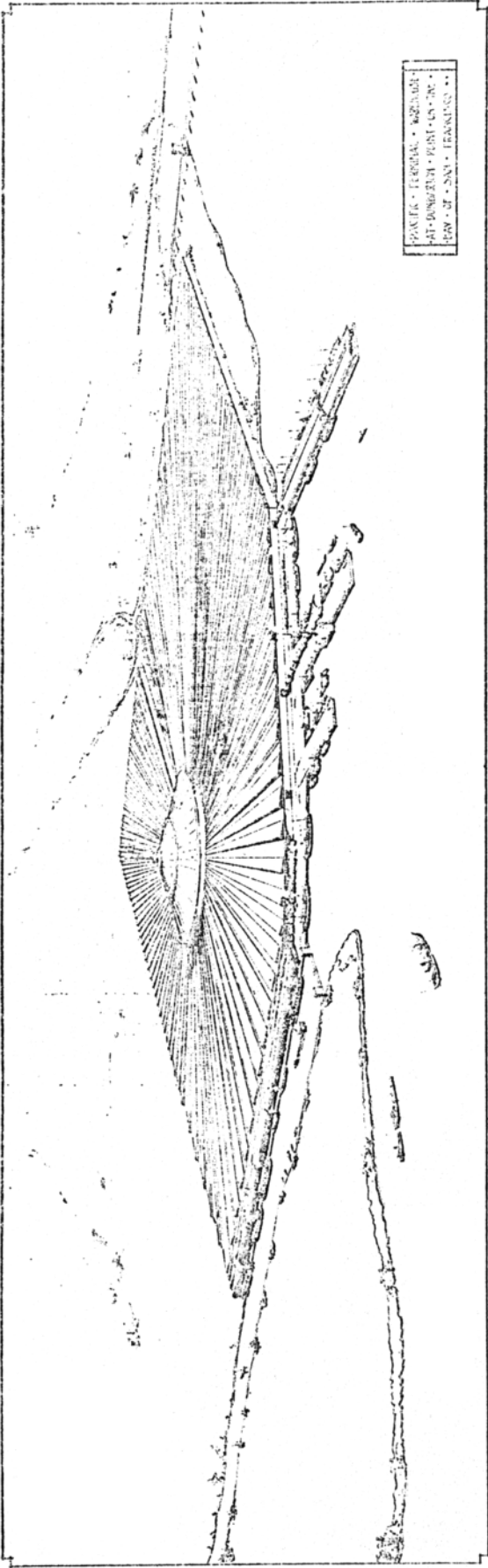


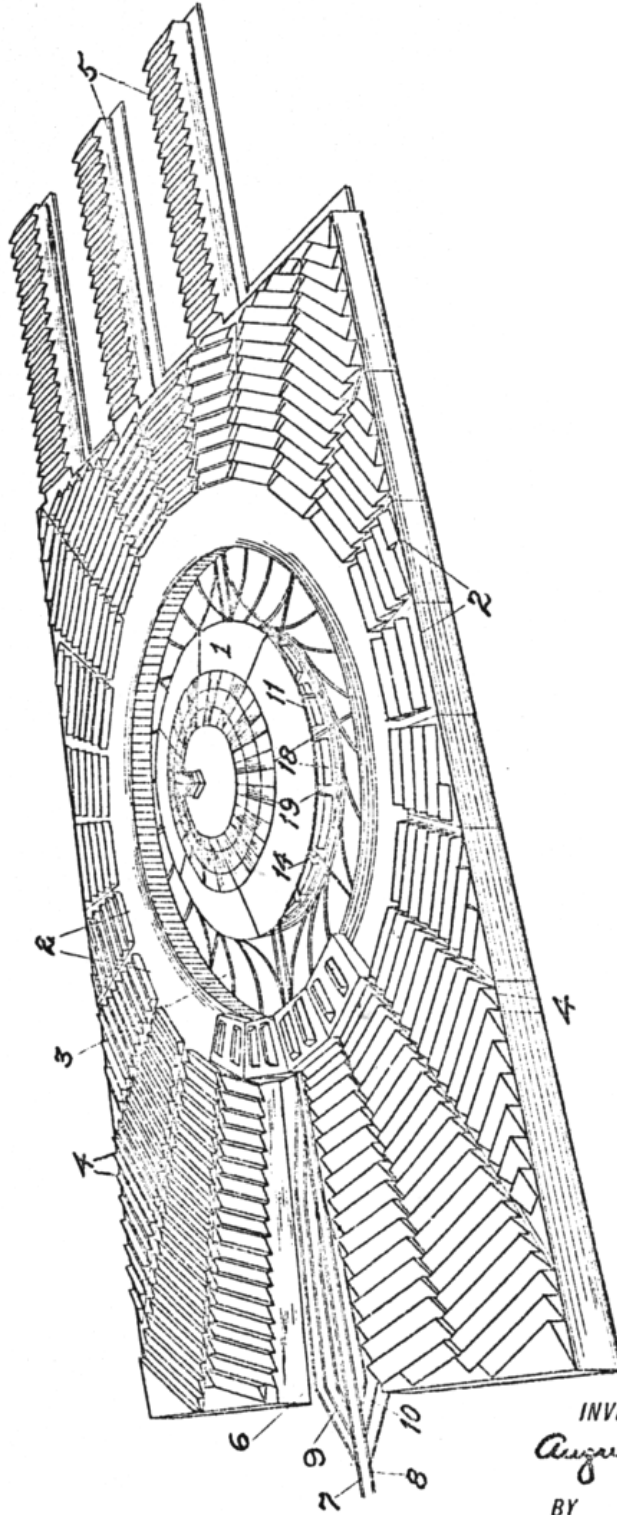
Figure 9: Perspectives of Pacific Terminal Warehouse

A. SCHILLING.
TERMINAL WAREHOUSE.
APPLICATION FILED AUG. 21, 1916.

1,207,226.

Patented Dec. 5, 1916.
6 SHEETS—SHEET 1.

FIG. 1.



WITNESS

Wm. F. Drew

INVENTOR

August Schilling








BY

Arthur J. Tamm
his ATTORNEYS

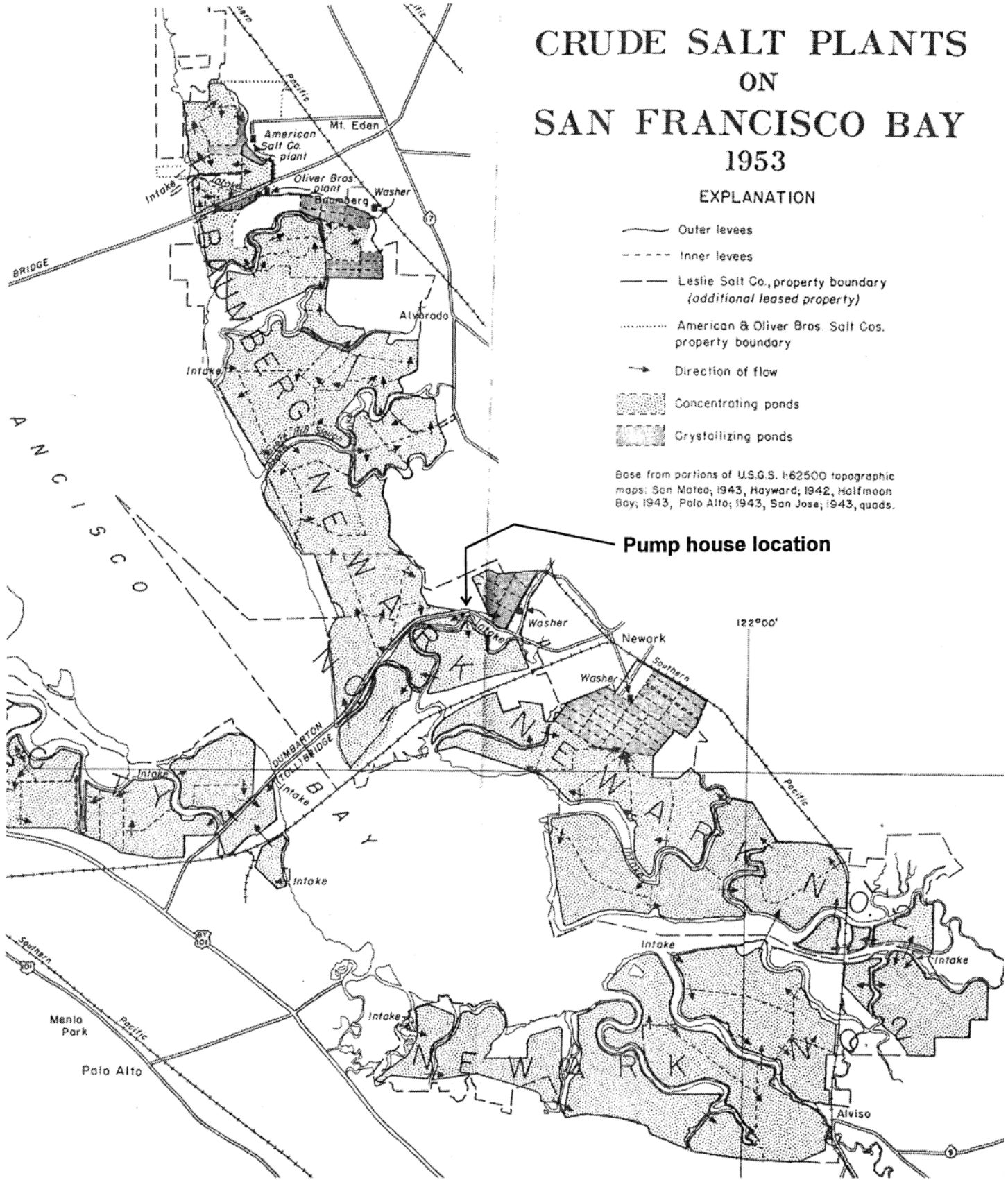
Figure 10: Perspective of Pacific Terminal Warehouse

CRUDE SALT PLANTS ON SAN FRANCISCO BAY 1953

EXPLANATION

-  Outer levees
-  Inner levees
-  Leslie Salt Co., property boundary (additional leased property)
-  American & Oliver Bros. Salt Cos. property boundary
-  Direction of flow
-  Concentrating ponds
-  Crystallizing ponds

Base from portions of U.S.G.S. 1:62500 topographic maps: San Mateo; 1943, Hayward; 1942, Halfmoon Bay; 1943, Palo Alto; 1943, San Jose; 1943, quads.



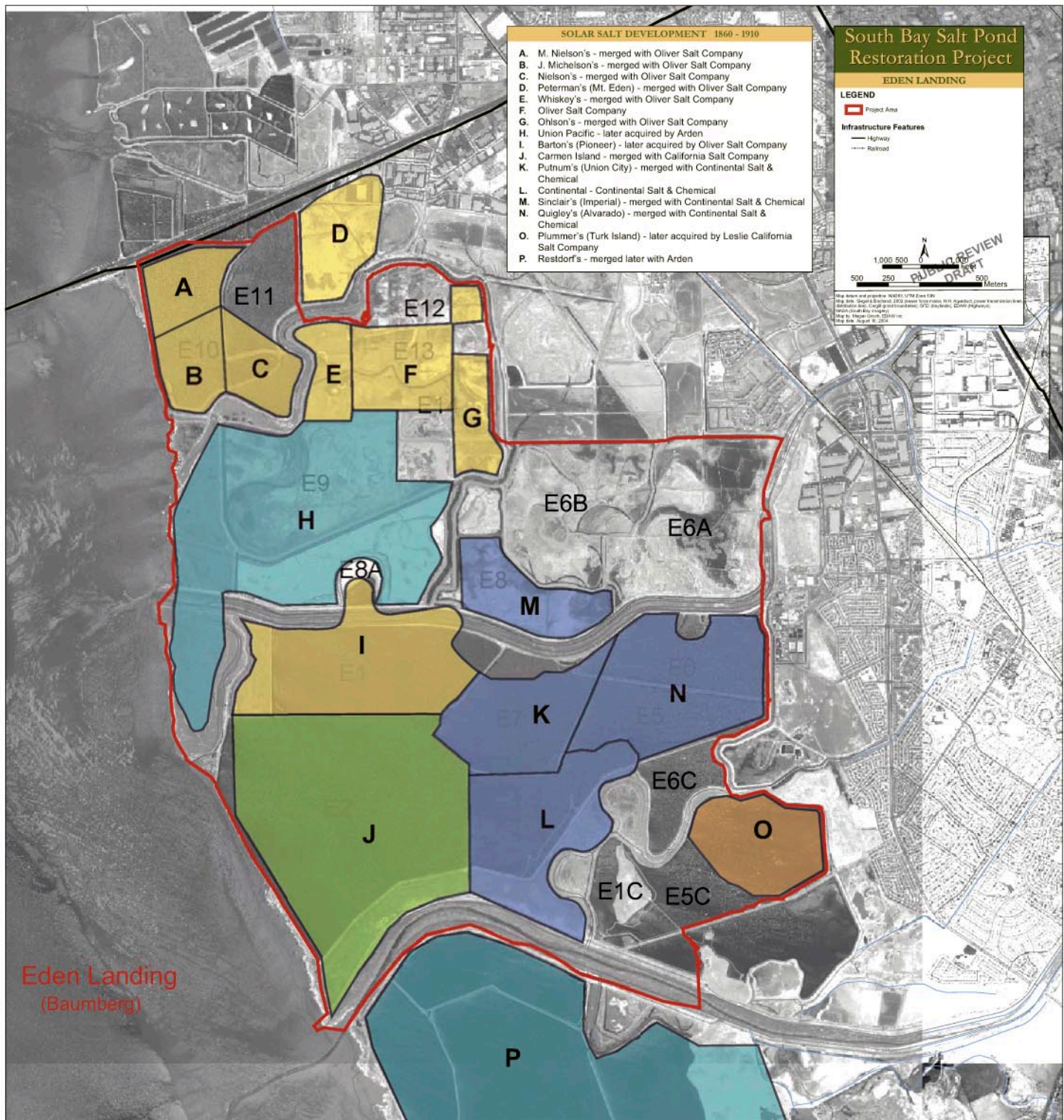
Source: Leslie Salt Company, 1953

Figure 11: Leslie Salt Company's Salt Operations



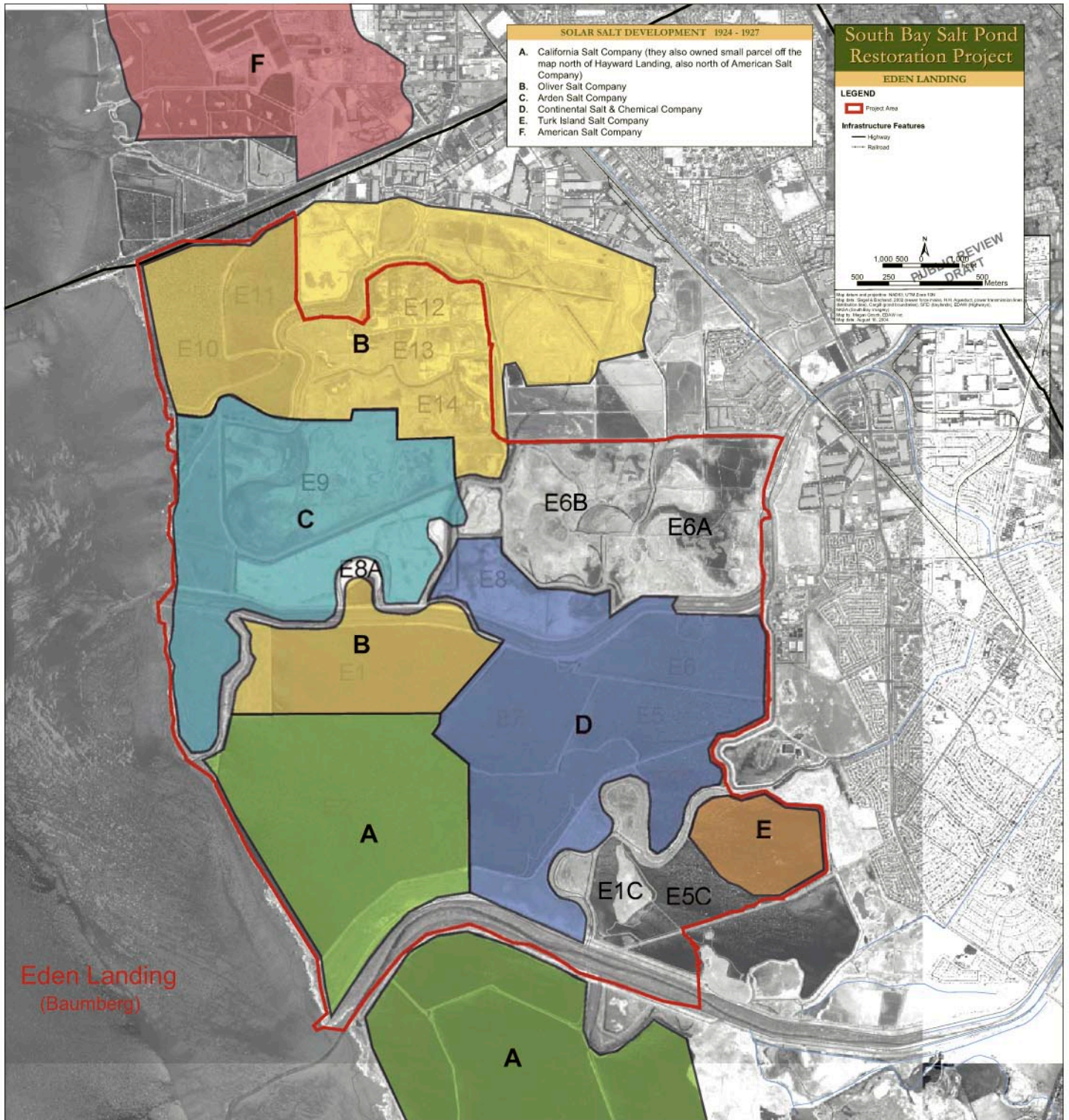
Photo: L. Watt, December 2004

Figure 12: Don Edwards San Francisco Bay
Wildlife Refuge



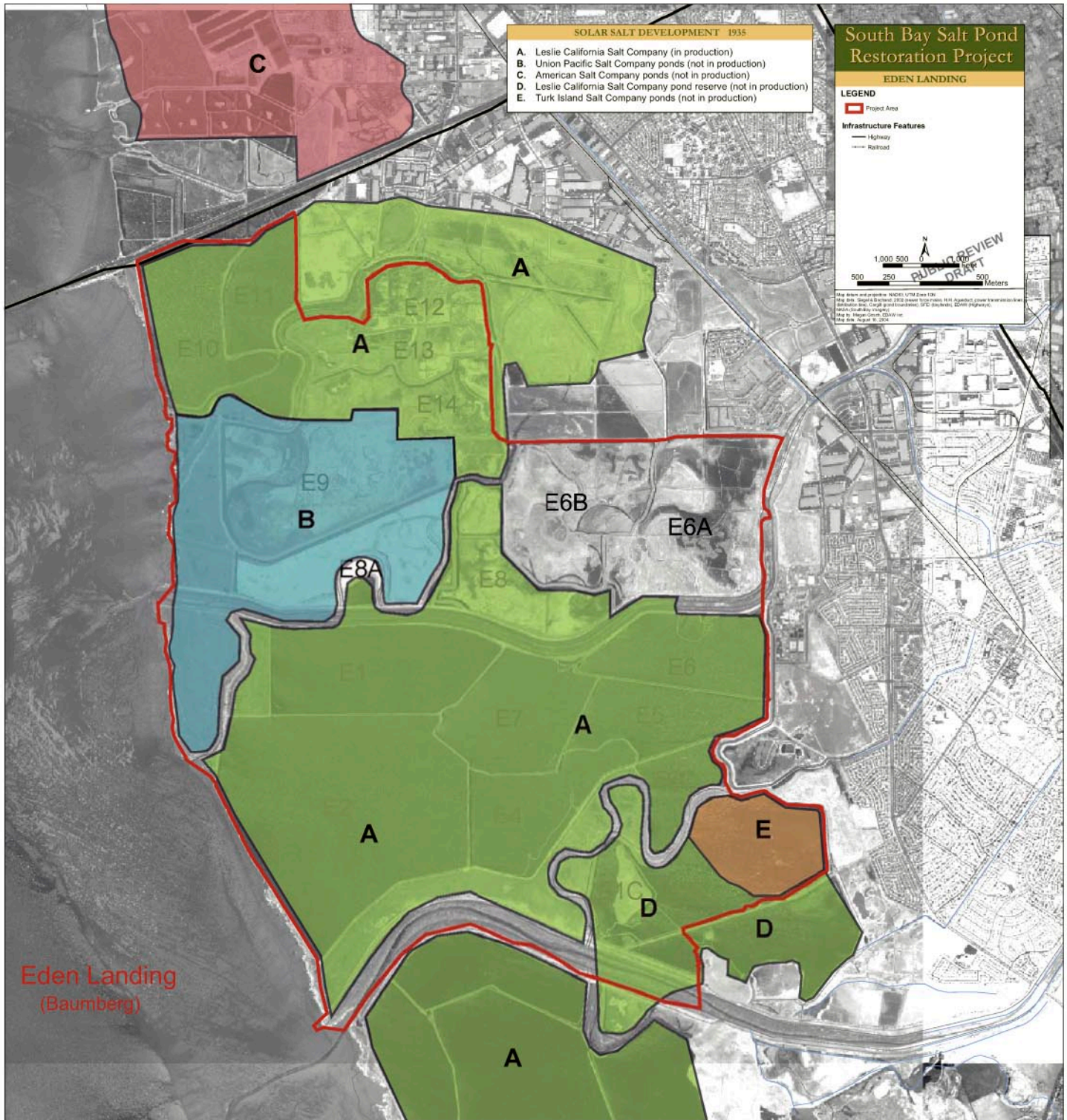
Source: Claire Lopez report, 1971

Figure 13: Solar Salt Development Eden Landing, 1860 - 1910



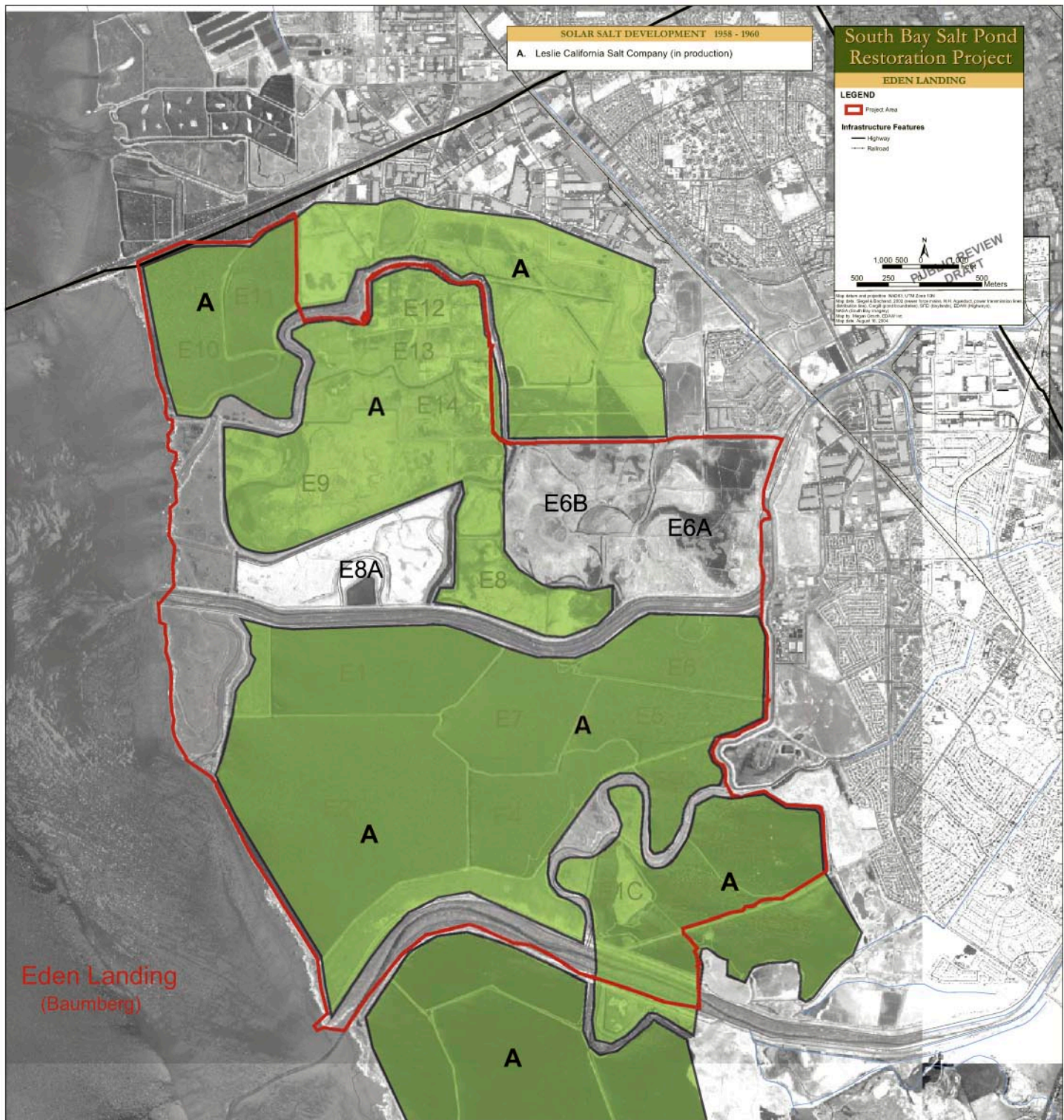
Source: Claire Lopez report, 1971

Figure 14: Solar Salt Development Eden Landing, 1924 - 1927



Source: Claire Lopez report, 1971

Figure 15: Solar Salt Development Eden Landing, 1935



Source: Claire Lopez report, 1971

Figure 16: Solar Salt Development, Eden Landing, 1958 - 1960

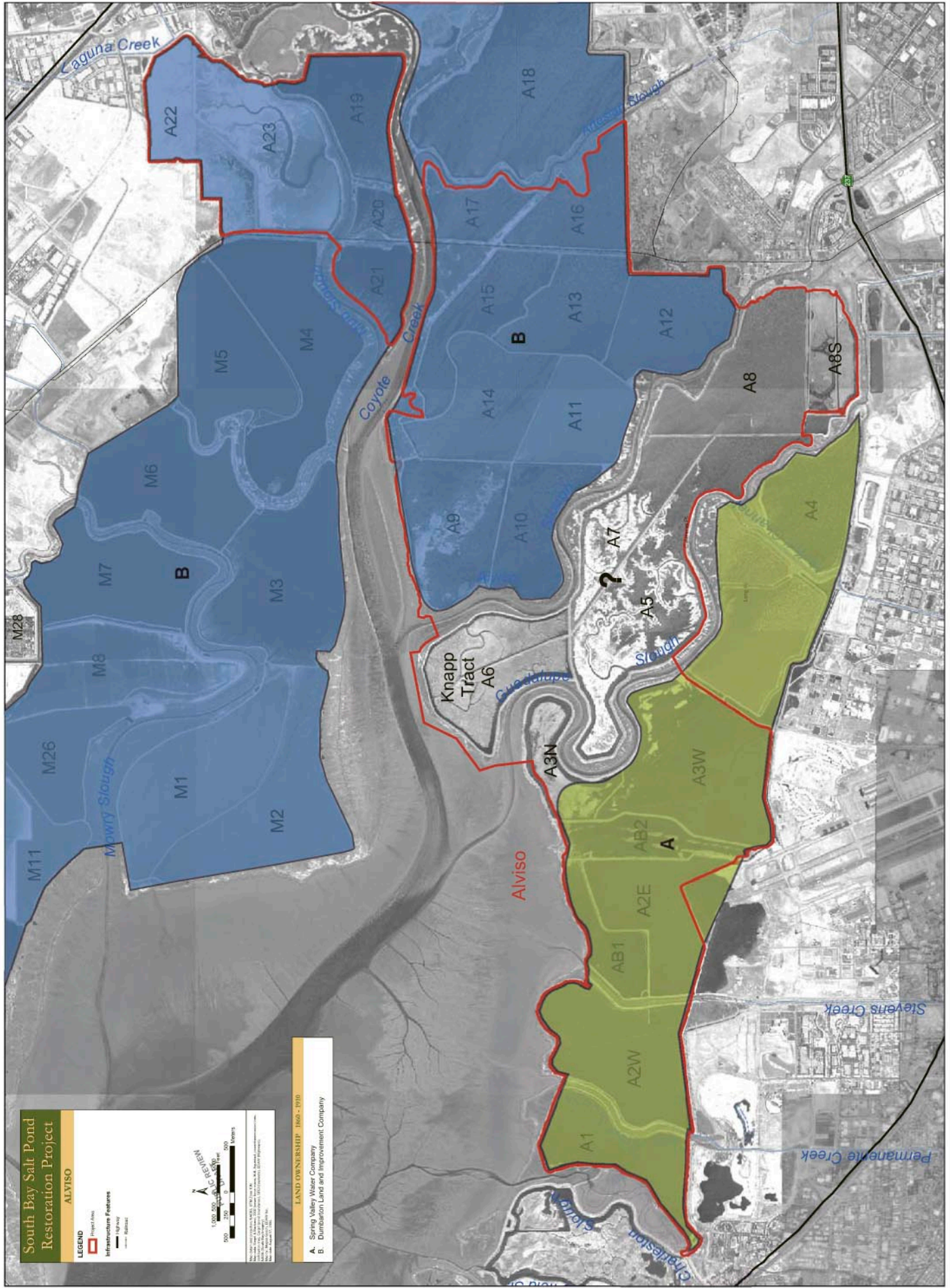


Figure 17: Solar Salt Development, Alviso, 1860 - 1910

Source: Claire Lopez report, 1971

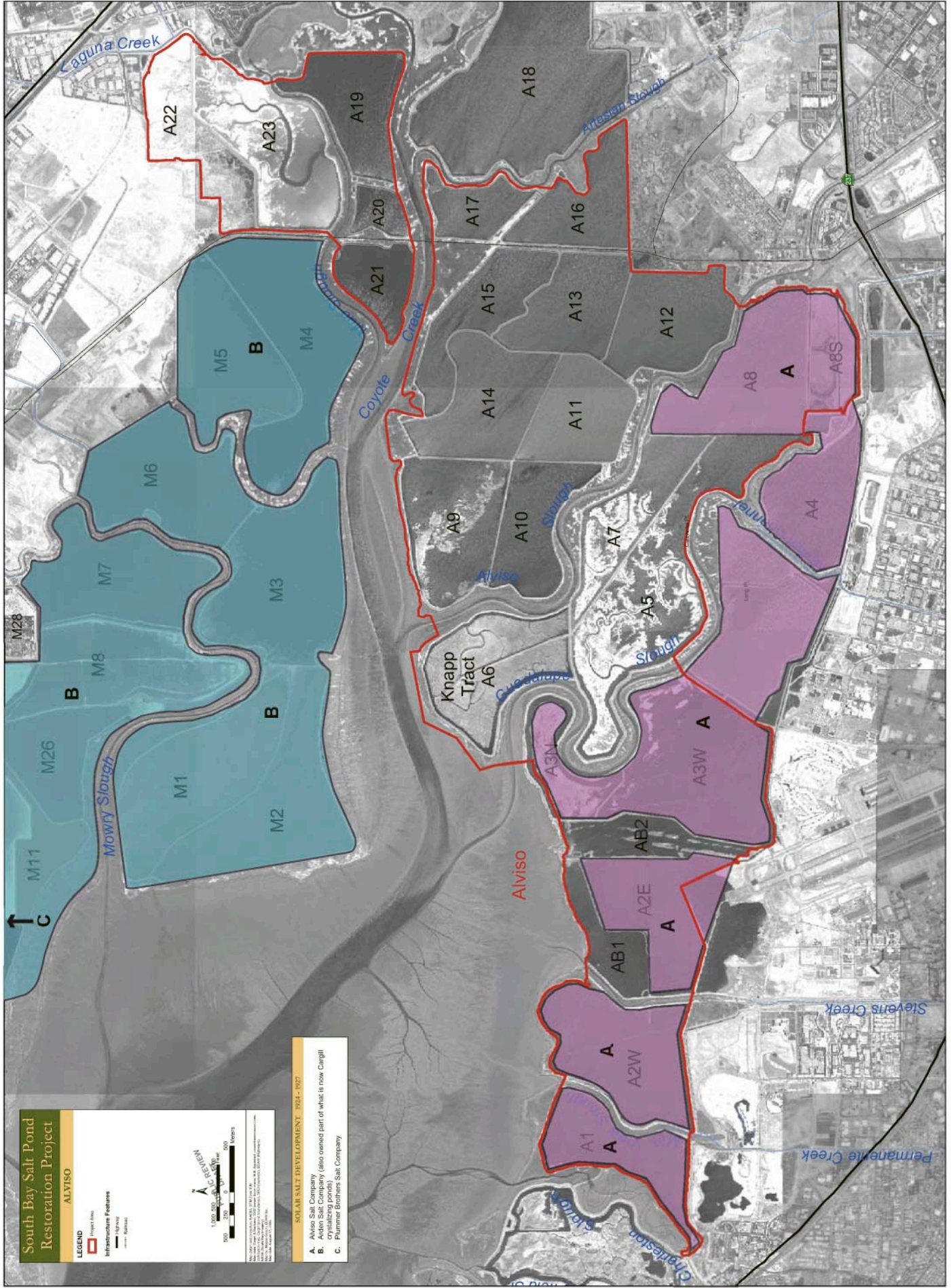


Figure 18: Solar Salt Development, Alvise, 1924 - 1927

Source: Claire Lopez report, 1971

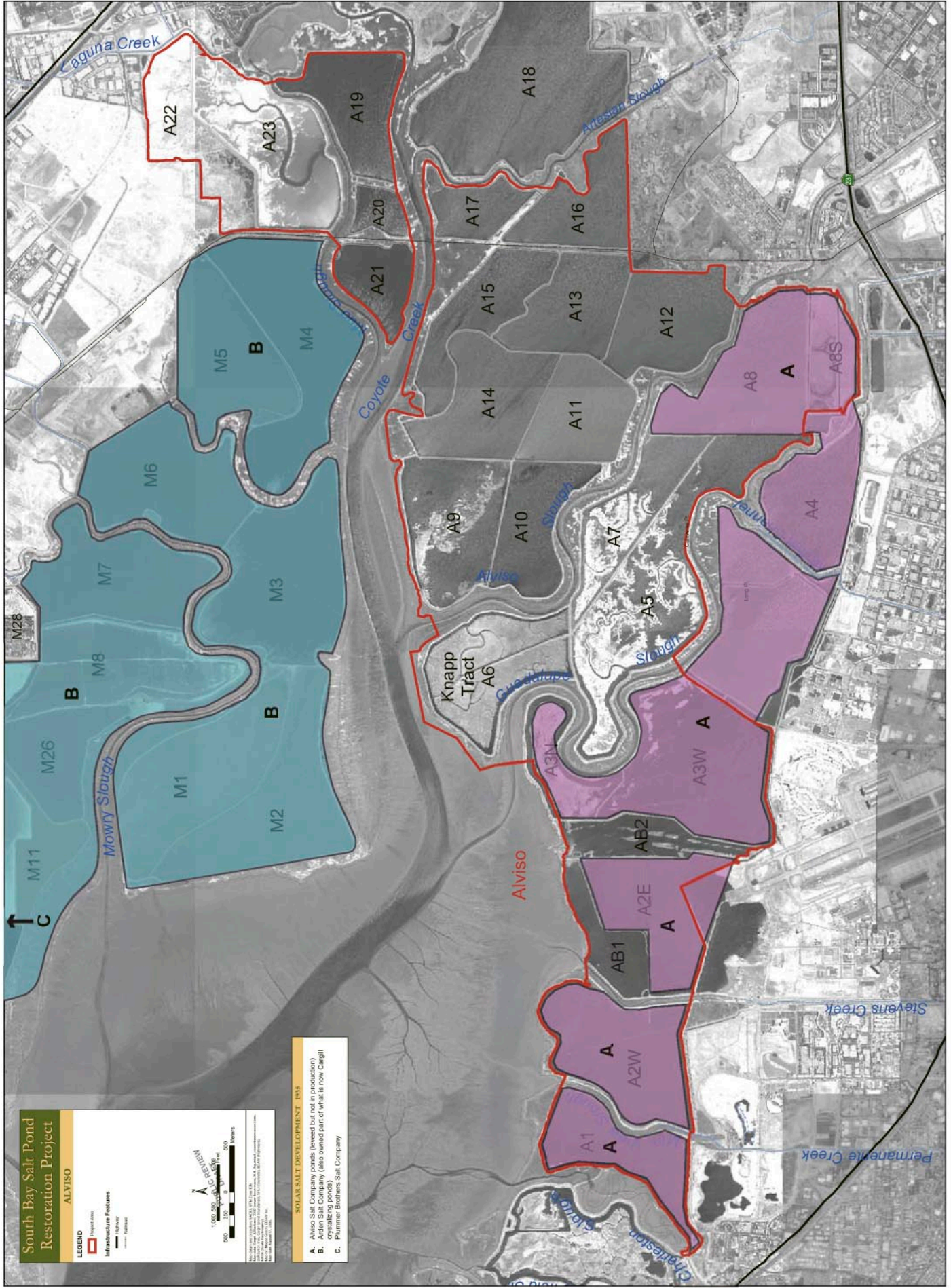


Figure 19: Solar Salt Development, Alviso, 1935

Source: Claire Lopez report, 1971

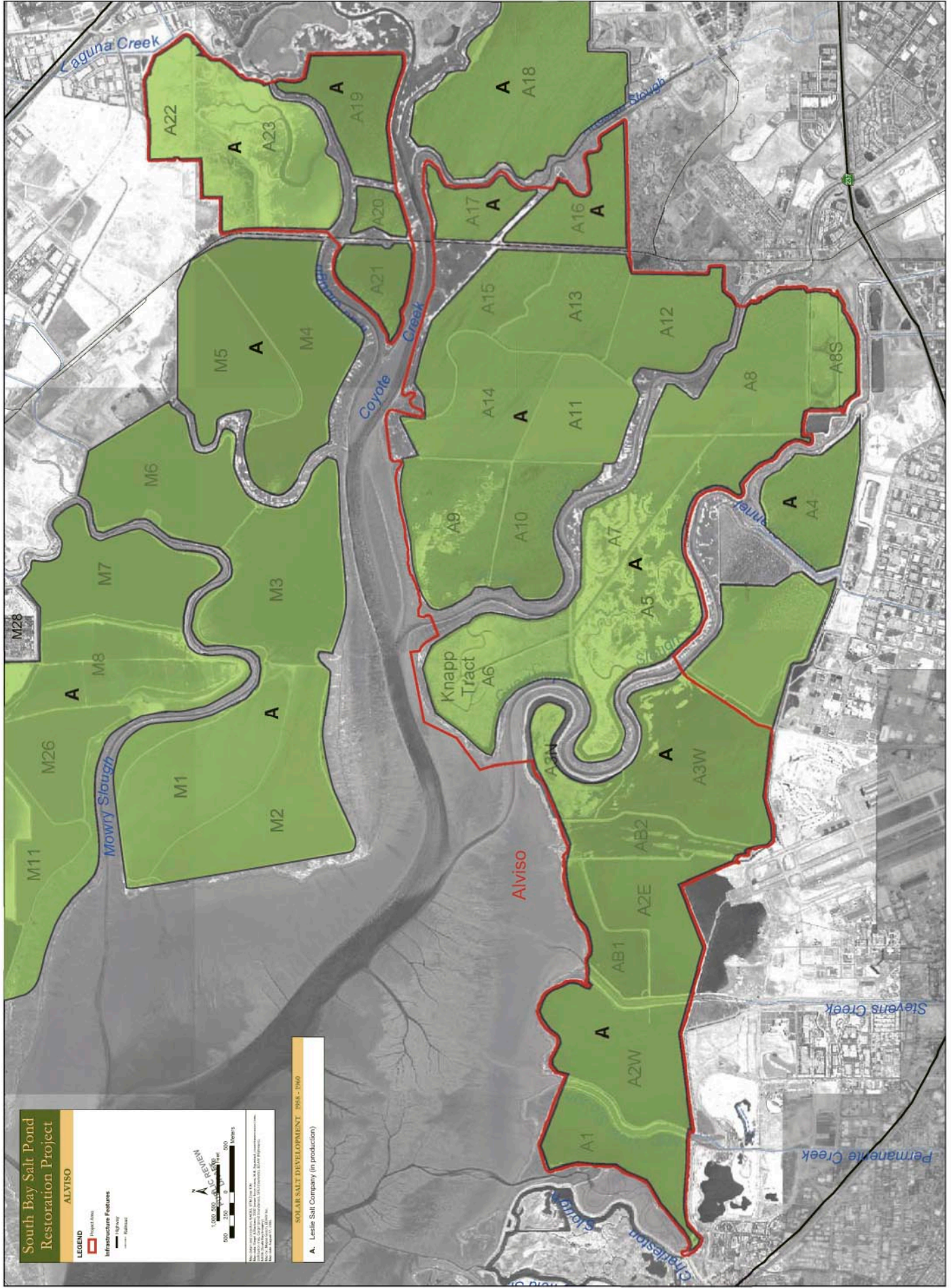
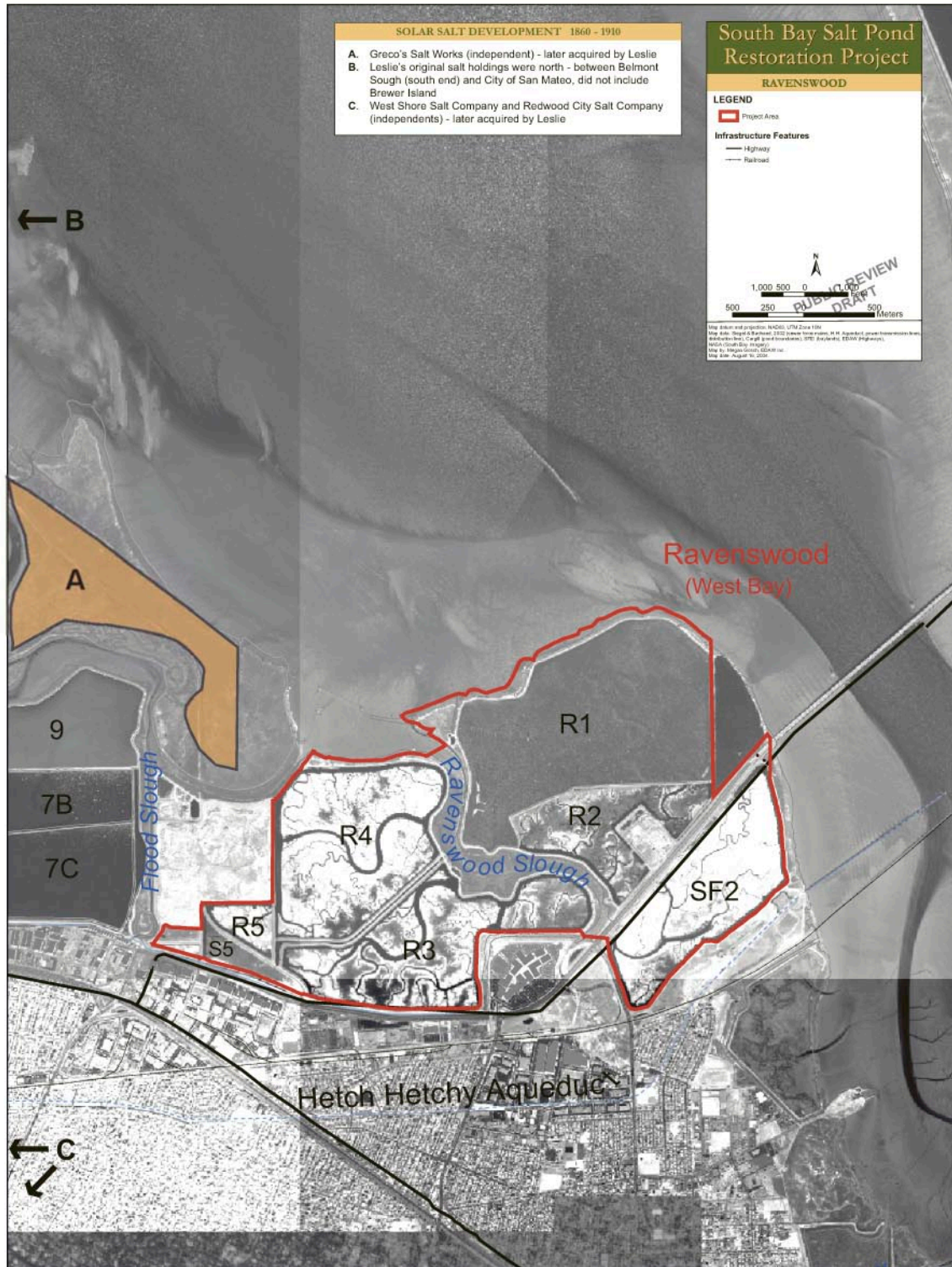


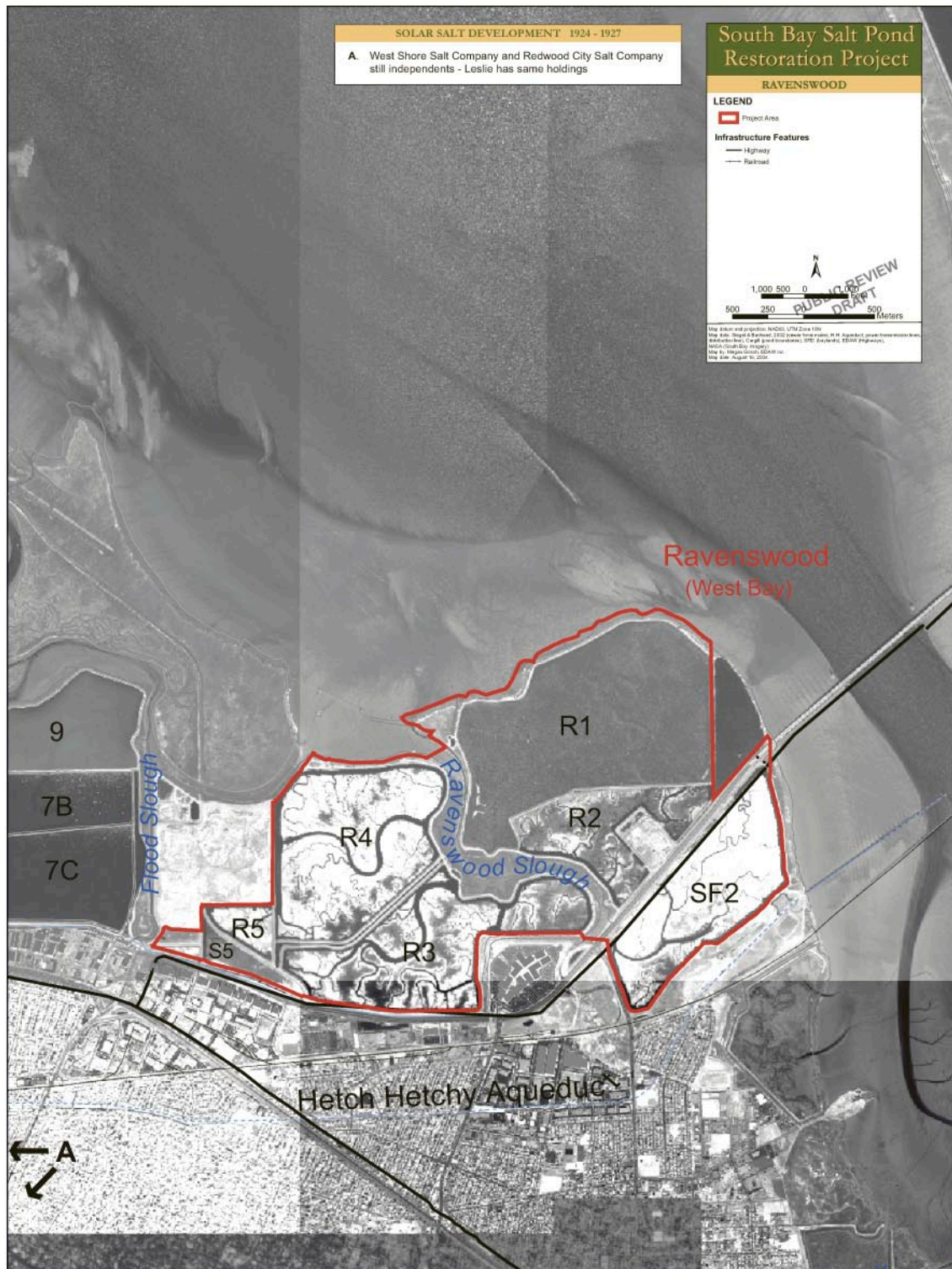
Figure 20: Solar Salt Development, Alviseo, 1958 - 1960

Source: Claire Lopez report, 1971



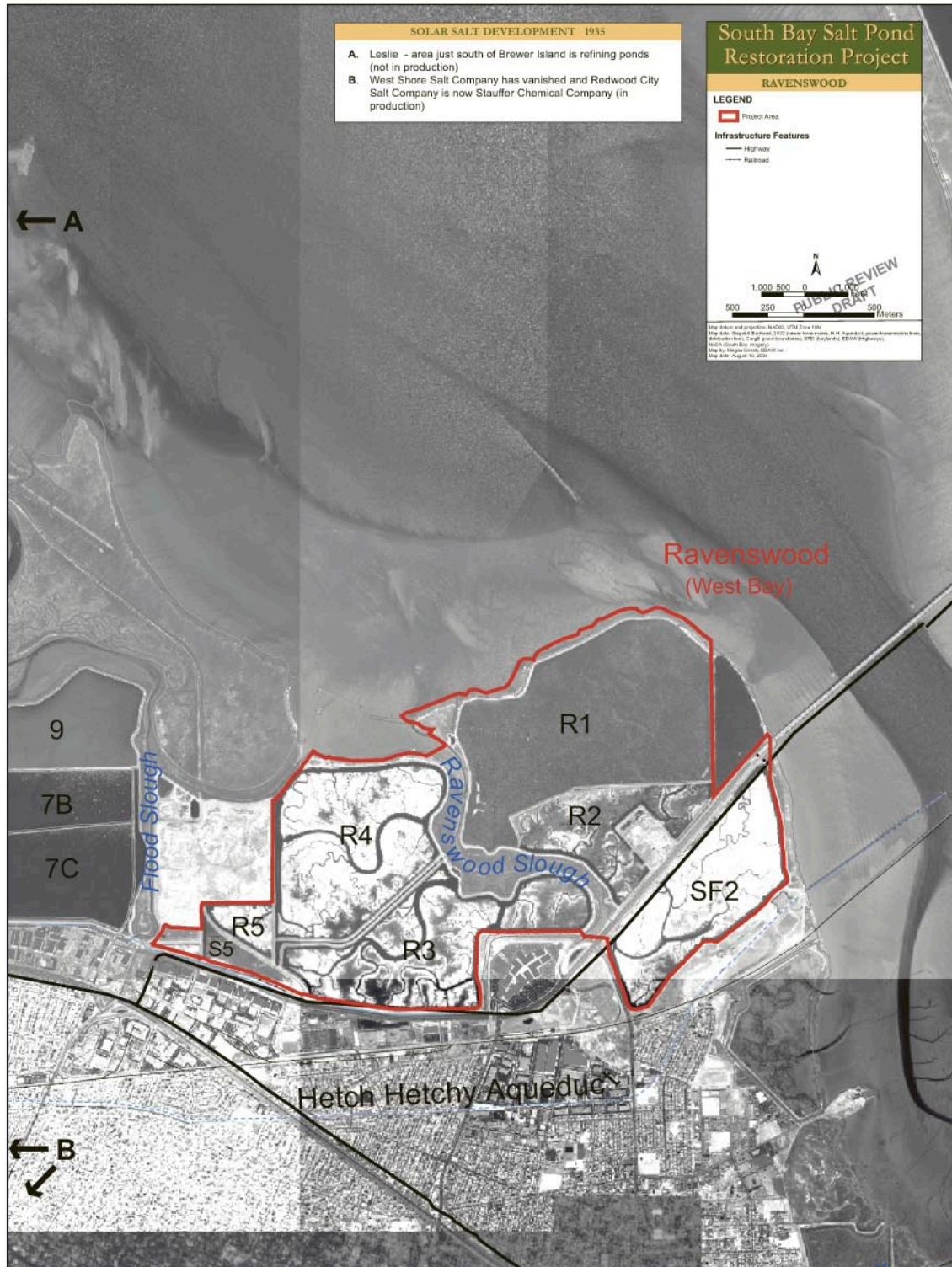
Source: Claire Lopez report, 1971

Figure 21: Solar Salt Development Ravenswood, 1860 - 1910



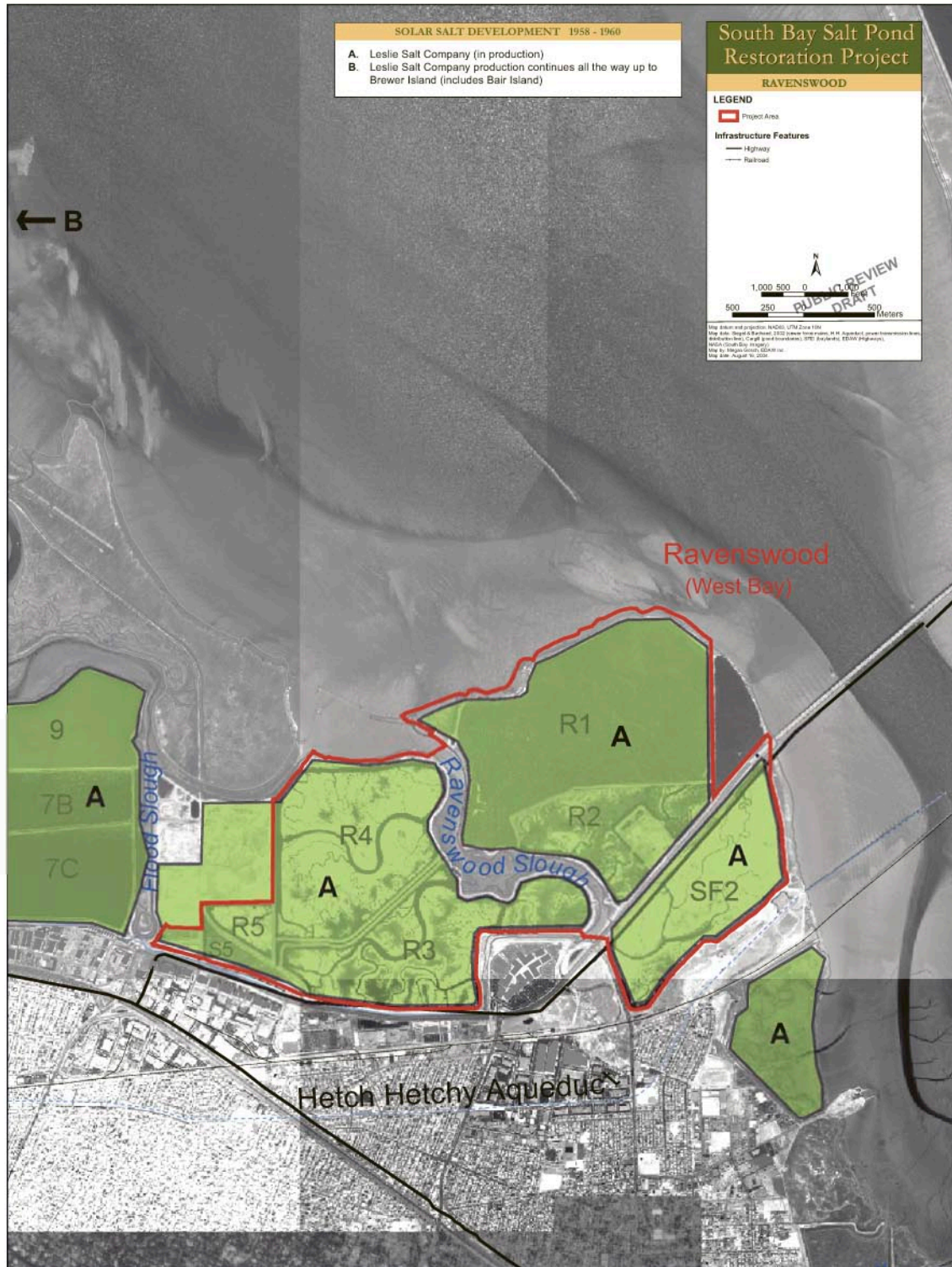
Source: Claire Lopez report, 1971

Figure 22: Solar Salt Development Ravenswood, 1924 - 1927



Source: Claire Lopez report, 1971

Figure 23: Solar Salt Development Ravenswood, 1935



Source: Claire Lopez report, 1971

Figure 24: Solar Salt Development Ravenswood, 1958 - 1960



Figure 25: Aerial View of Salt Ponds

Source: USGS



Photo: L. Watt, October 2004

Figure 26: Levee Gate, Union City Salt Works



Photo: L. Watt, October 2004

Figure 27: Pink Crystallizer Pond, Cargill Salt Works



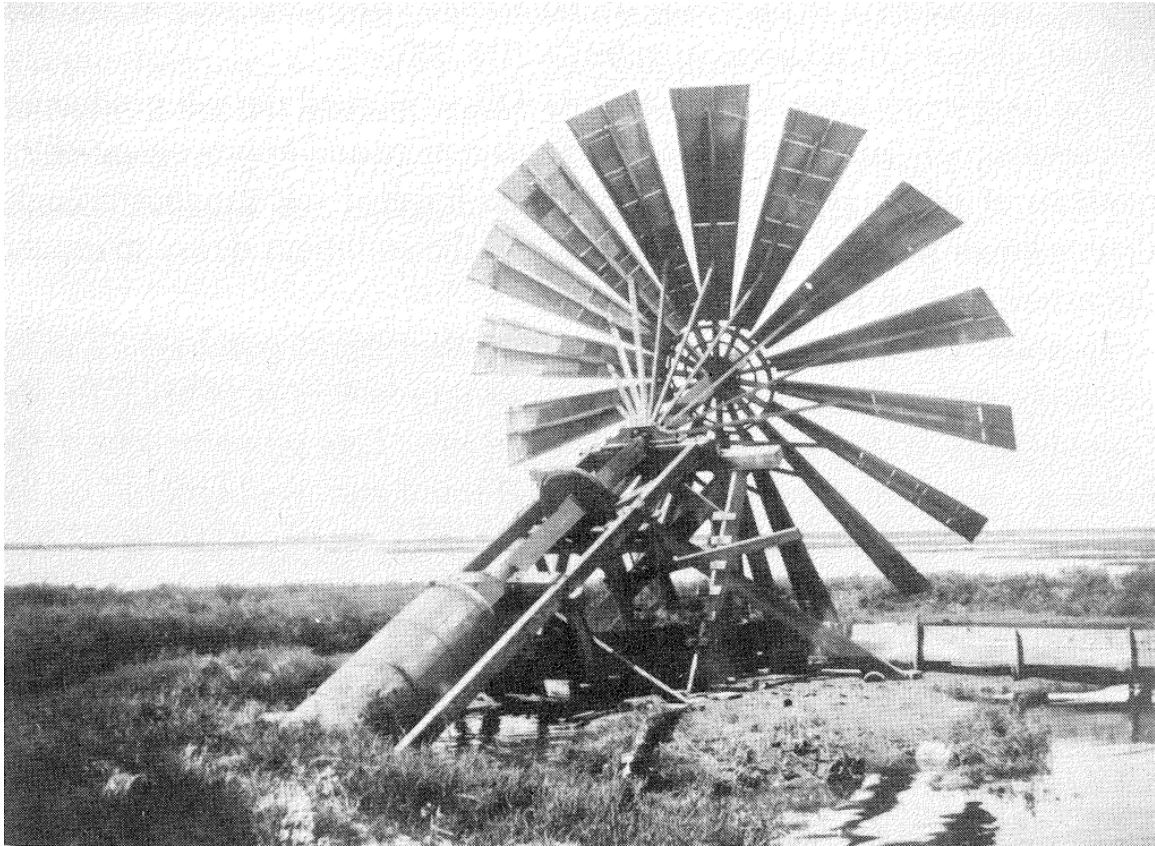
Photo: L. Watt, October 2004

Figure 28: Crystallizer Pond Ready to Harvest, Cargill Salt Works



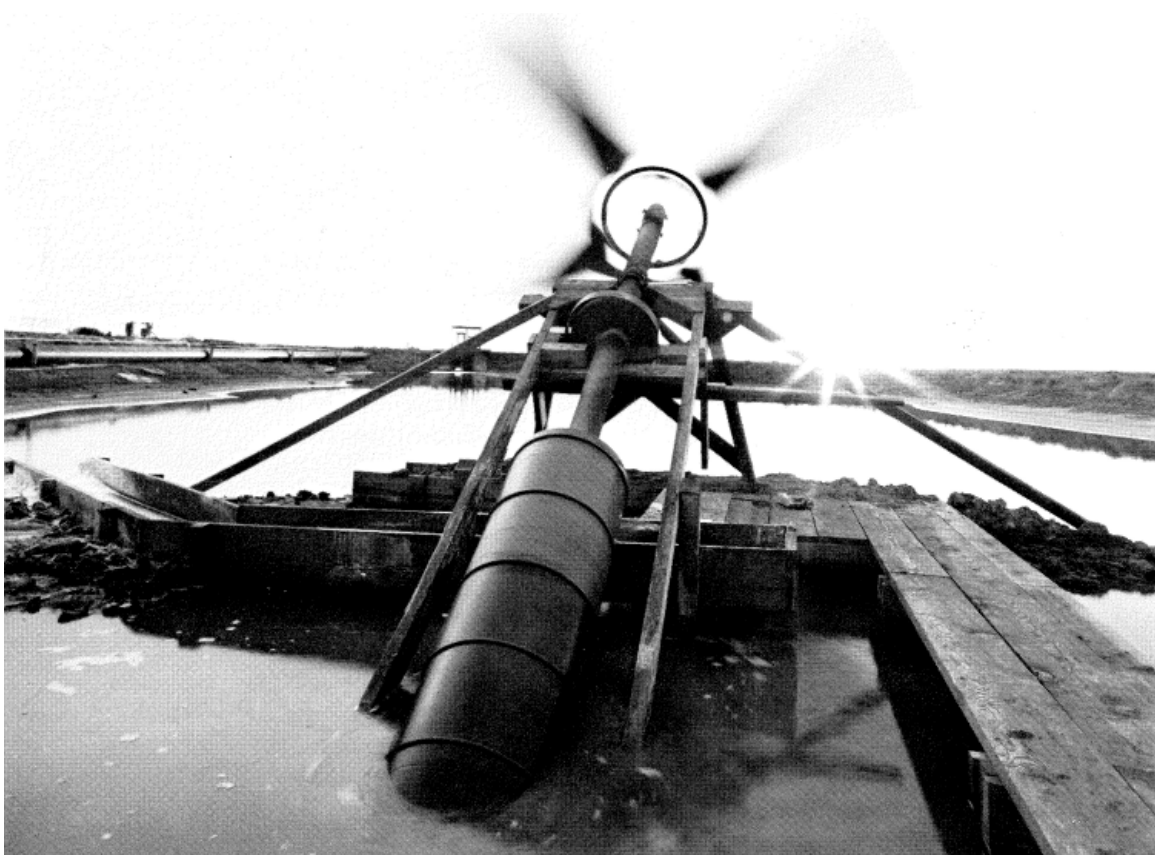
Photo: L. Watt, October 2004

Figure 29: Harvested Salt, Cargill Salt Works



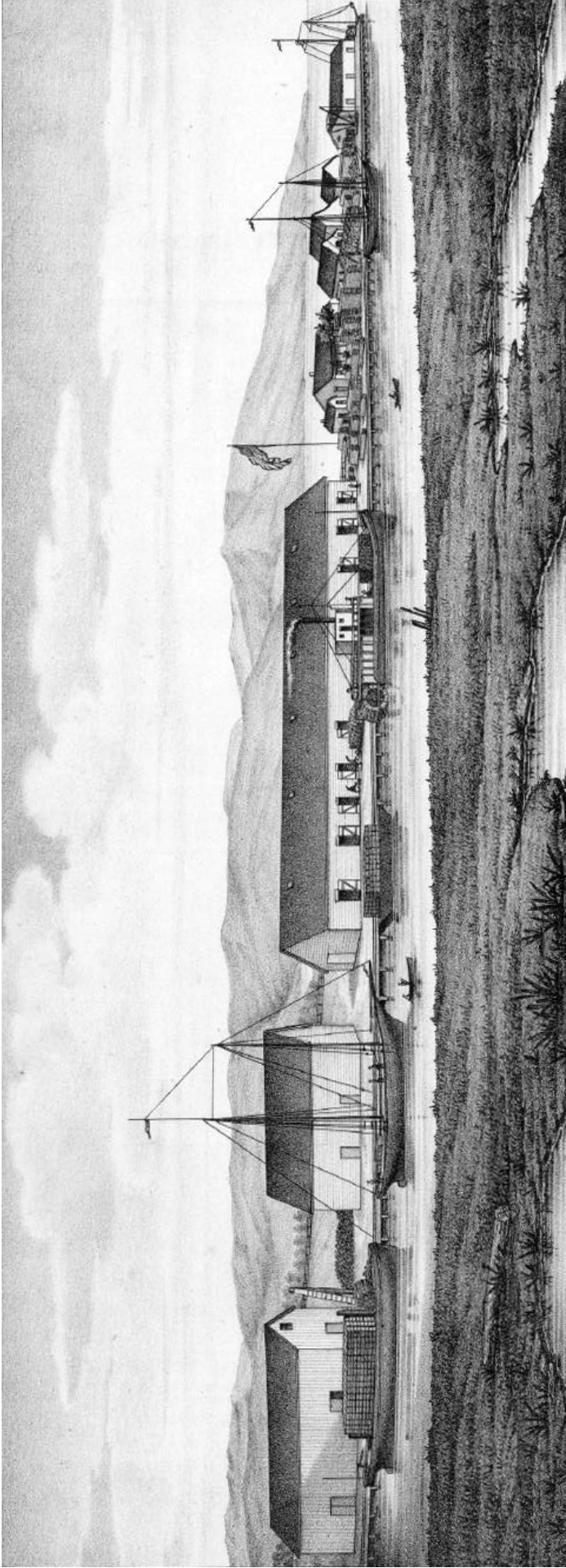
Source: Leslie Salt Company, circa 1900

Figure 30: Archimedes Screw Pump



Source: Leslie Salt Company, 1984

Figure 31: Archimedes Screw Pump



Source: Thompson & West Atlas of Alameda County, 1878

Figure 32: Roberts Landing



Photo: L. Watt, December 2004

Figure 33: Boardwalk, Don Edwards
San Francisco Bay Wildlife Refuge



Photo: L. Watt, October 2004

Figure 34: Pilings, Oliver Salt Works



Photo: L. Watt, October 2004

Figure 35: Pilings, Union City Salt Works



Photo: L. Watt, October 2004

Figure 36: Poles, Oliver Salt Works



Photo: L. Watt, October 2004

Figure 37: Old Tracks, Oliver Salt Works



Photo: L. Watt, October 2004

Figure 38: Metal Tanks, Oliver Salt Works



Photo: L. Watt, October 2004

Figure 39: Shack, Union City Salt Works



Photo: L. Watt, October 2004

Figure 40: Levee, Union City Salt Works