

Science Update
Stakeholder Forum
November 15, 2012

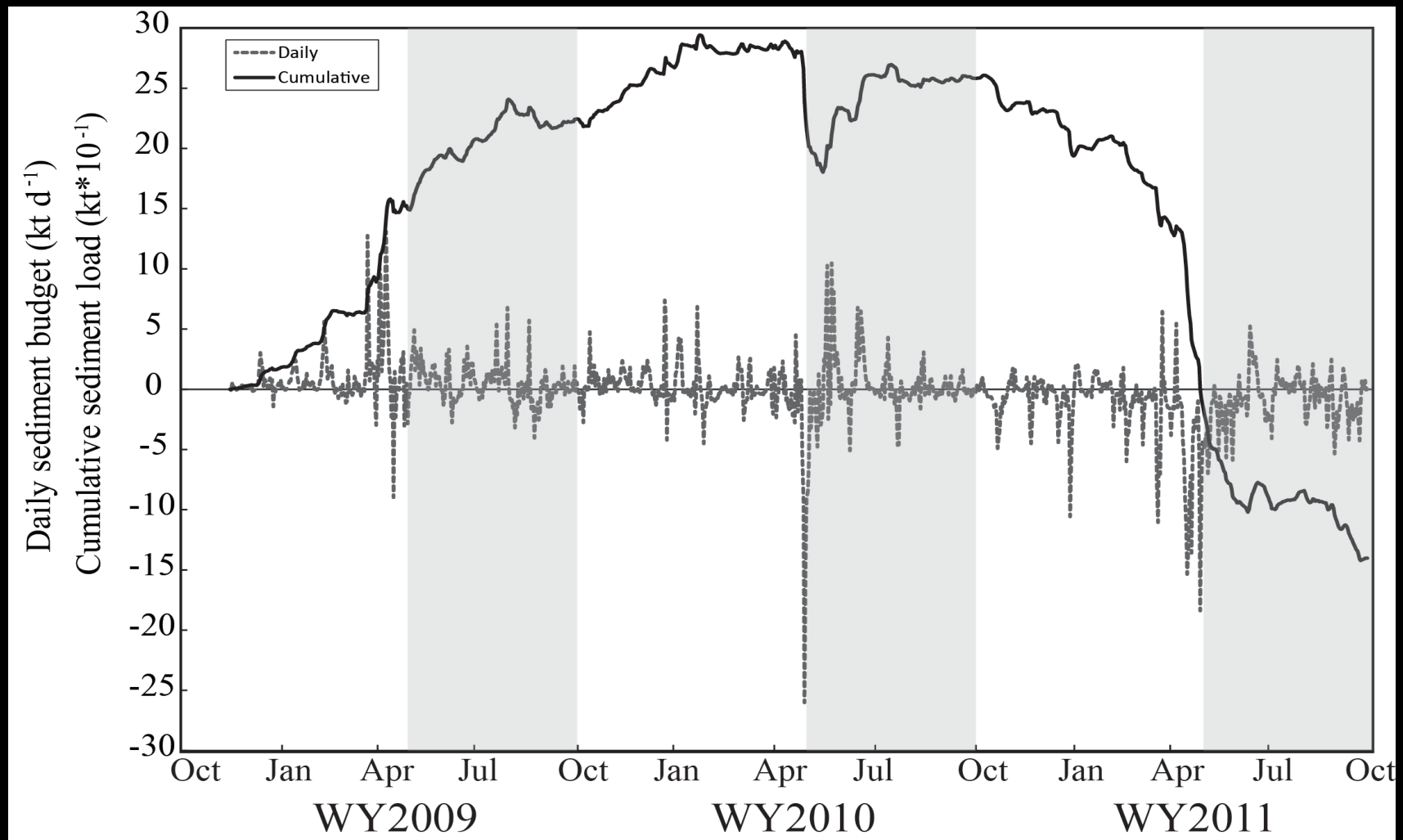
Laura Valoppi
Lead Scientist

Sediment Budget and Mudflats



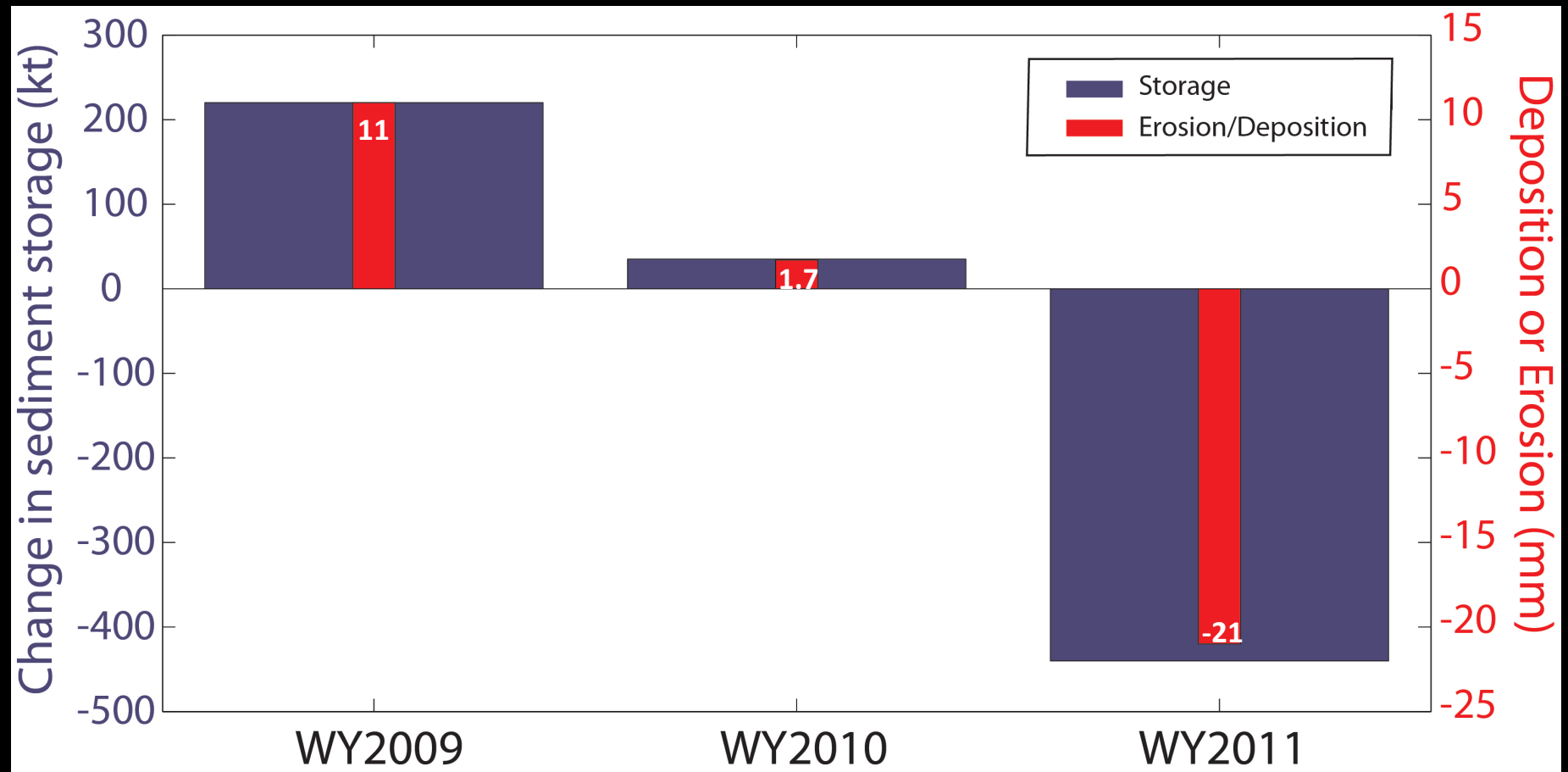
Sediment Budget Results

Positive values are into Far Southern SFB



Sediment Budget Results

Positive values are into Far Southern SFB



Sediment/ Mudflat Conclusions

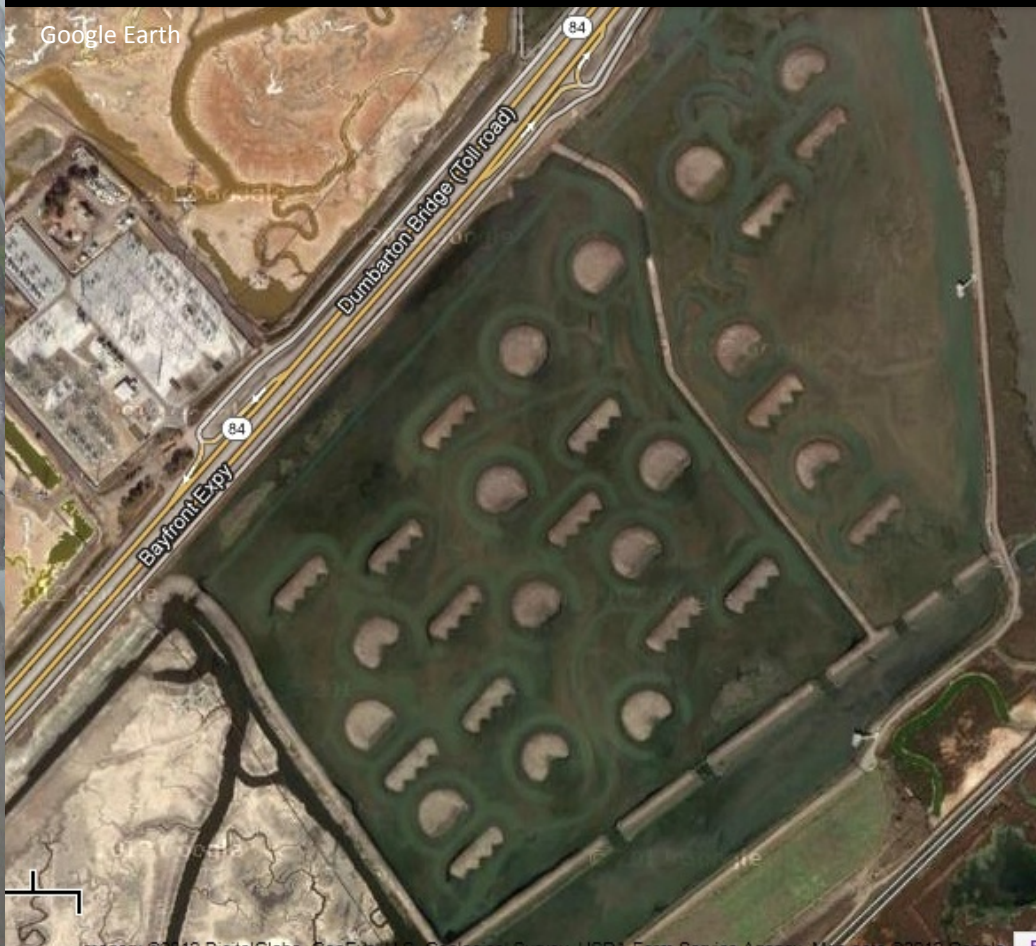
- Dumbarton flux dominates sediment budget
- Dumbarton flux related to Delta flow
- Large uncertainties on sediment flux
- Science Team consensus to do tidal restorations sooner than later – head start for marshes
- Mudflats – did not observe changes in 2009 – 2011, but need better method of assessing change.

Breeding Bird Use of Islands



Pond SF2 “Bird Laboratory”

- Enhance pond with nesting islands, plover nesting area
- Controlled tidal flow



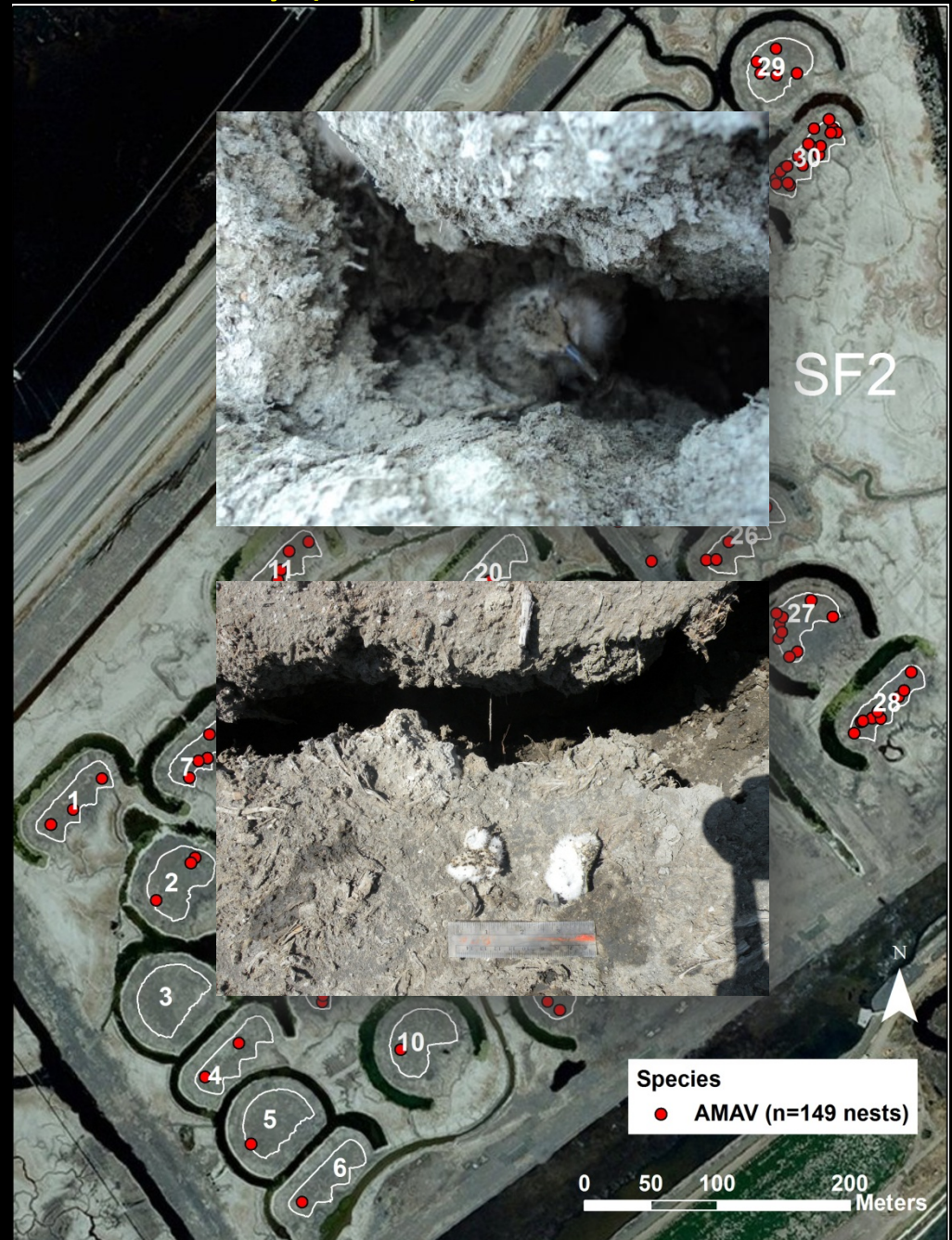
Nest Locations on at Bird Laboratory (SF2) Islands in 2011

2011

193 nests
28 of 30 islands used
80% of nests on islands
6% of nests on levees
14% of nests in cell 3 panne

2012

68 nests
2 of 30 islands used
6% of nests on islands
0% of nests on levees
94% of nests in cell 3 panne



Summary for Bird Islands

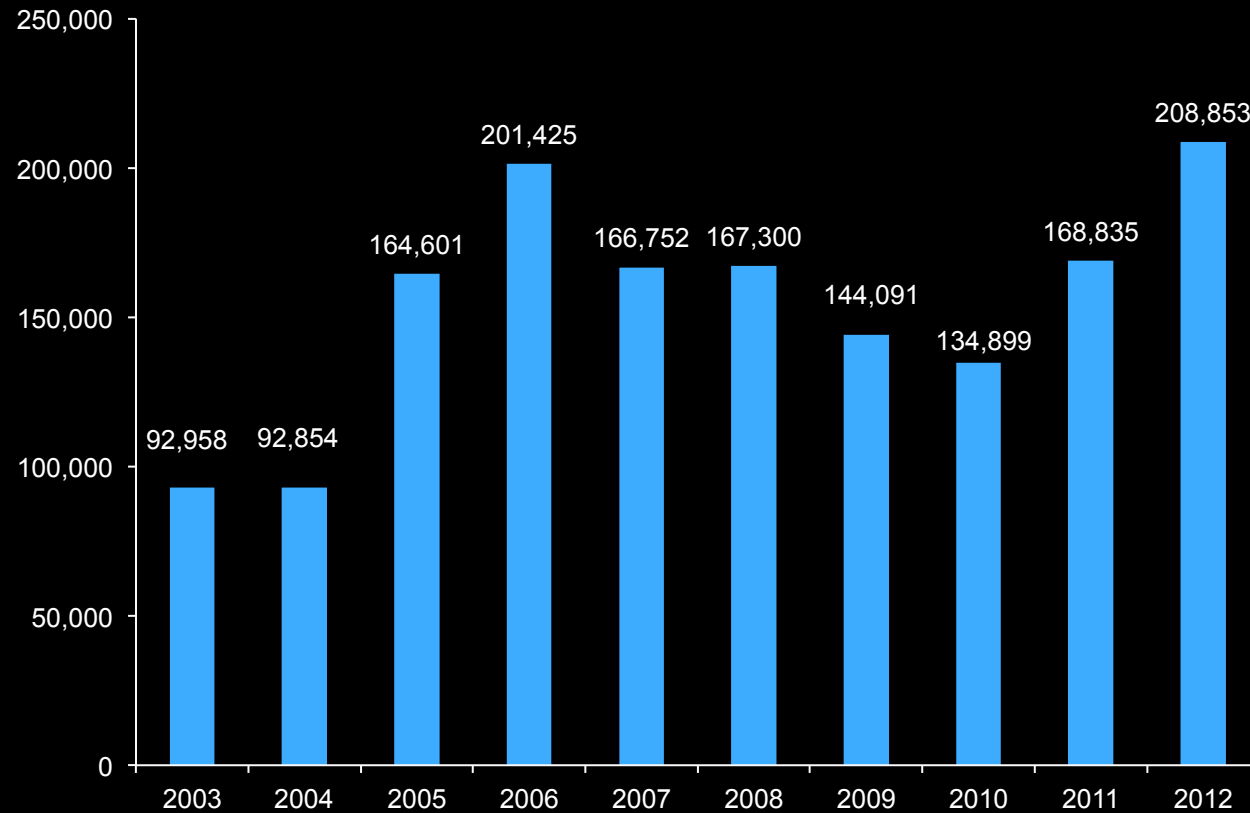
- Birds nest on islands
- Nest site selection - island characteristics and other nest locations
- More islands per pond
more nests per pond
- Spread out island among ponds - 1-3 islands/ponds
- **Best:** Medium sized, linear islands



Migratory and Wintering Birds



Mean Total Birds During Winter



Birds increased 125% from Winter

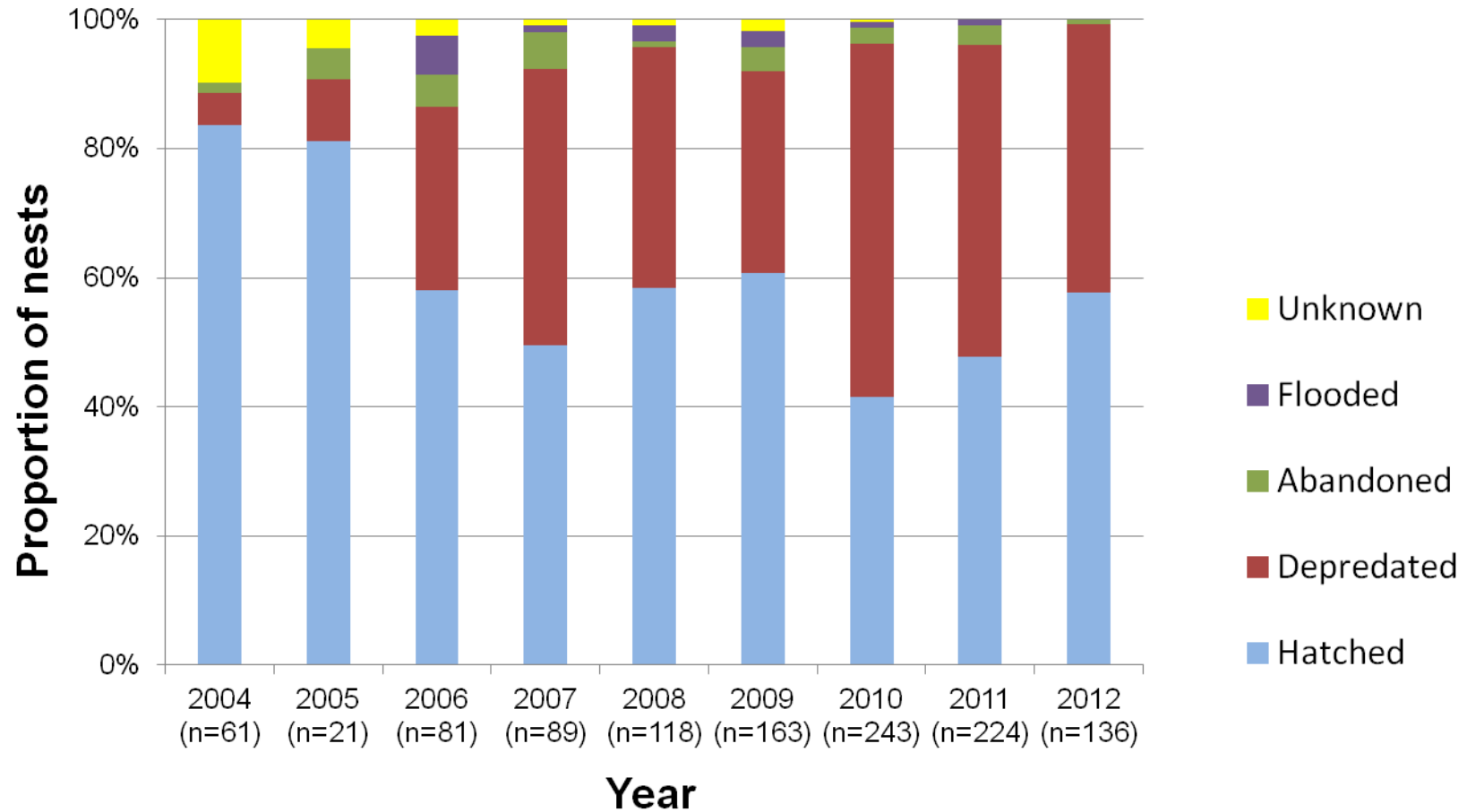
Western Snowy Plover Monitoring in the South San Francisco Bay



SAN FRANCISCO BAY
BIRD OBSERVATORY

Robinson-Nilsen, Bluso-Demers, Tokatlian, Donehower

Plover Nest Success



SAN FRANCISCO BAY
BIRD OBSERVATORY

Robinson-Nilsen, Bluso-Demers, Tokatlian, Donehower

Plover Fledging Success

Year	Fledging Success	# chicks banded
2008	29%	83
2009	25%	113
2010	41%	39
2011	14%	36



SAN FRANCISCO BAY
BIRD OBSERVATORY

Robinson-Nilsen, Bluso-Demers, Tokatlian, Donehower